

Fiber Patch Panel Guide

High-Density Fiber Management Solutions for Optimized
Network Architecture

Versatile Products for Varied Network Requirements

Maximize the performance of your network with reliable, high-quality fiber patch and adapter panels, fiber enclosures, and fiber cassettes. With our flexible inventory, we'll deliver the right products for your specific network requirements. Choose from a wide selection of customizable, versatile options designed with intuitive, modular features that simplify and support your network installations and expansions — today and tomorrow.

Patch Panels

Rack Mount Panels and Enclosures

Fiber Plate Adapters

Fiber Cassette Adapters

Patch Panels

Rackmount Solutions to Bridge Cable Connectivity

GigaTech Products LC Fiber Patch Panels are tailored to cater to the evolving needs of the rapidly expanding fiber industry. In data centers, where thousands of connections and meters of cables interconnect with numerous ports within a facility, a lack of structured cable management can swiftly result in potential outages, compromised connectivity, and delayed responses to service requests. LC Fiber Patch Panels offer a flexible solution to proper cable management, ease of maintenance, and cost efficient fiber deployment.

1U
SOLUTIONS



GT-LCDM-KCHDPPR1U-24A



GT-LCDS-KCHDPPR1U-24B

2U
SOLUTIONS



GT-LCDM-KCHDPPR2U-48A



GT-LCDS-KCHDPPR2U-48B

GT-LCDM-KCHDPPR1U-24A

LC Duplex Multimode, Rack Mount 1U- 24 Port Aqua



The GigaTech Products GT-LCDM-KCHDPPR1U-24A provides a rugged 1U rack mount solution for high density fiber termination. Constructed from 1.5mm cold-rolled carbon steel, it features 24 LC Duplex ports to create a complete system for connectivity . Designed to be applied in LANs housing, optical communication, FTTH, and data center cabling these LC Fiber Patch Panels offer a flexible solution to proper cable management, ease of maintenance, and cost efficient fiber deployment. As with all GigaTech products, these panels are tested for quality and reliability and are covered by our standard Lifetime Warranty.

Features

- 1U Rack Mountable
- TIA/EIA-568.3-D Adapter Colors
- Up to 24 LC duplex connections
- Tool-less adapter removal
- Mounts to standard 19" EIA Rack

Compliance

- RoHS Compliant
- ISO9001
- TIA/EIA-568-C.3

Applications:

- Network Management

Specifications

| | | | |
|---------------------|--------------------|--------------------|--------------------|
| Port Count | 24 | Rack Spaces | 1U |
| Material | SPCC Steel | Loaded | Yes |
| Adapter Type | LC Duplex MMF | Fiber Mode | OM4 (OM3) 50/125µm |
| Installation | EIA 19" Rack Rails | Cable Entry | Front & Rear |
| Dimensions | 12x 43.5 x 486.2mm | Mount Type | Rack Mount |

GT-LCDM-KCHDPPR1U-24A

LC Duplex Multimode, Rack Mount 1U- 24 Port Aqua

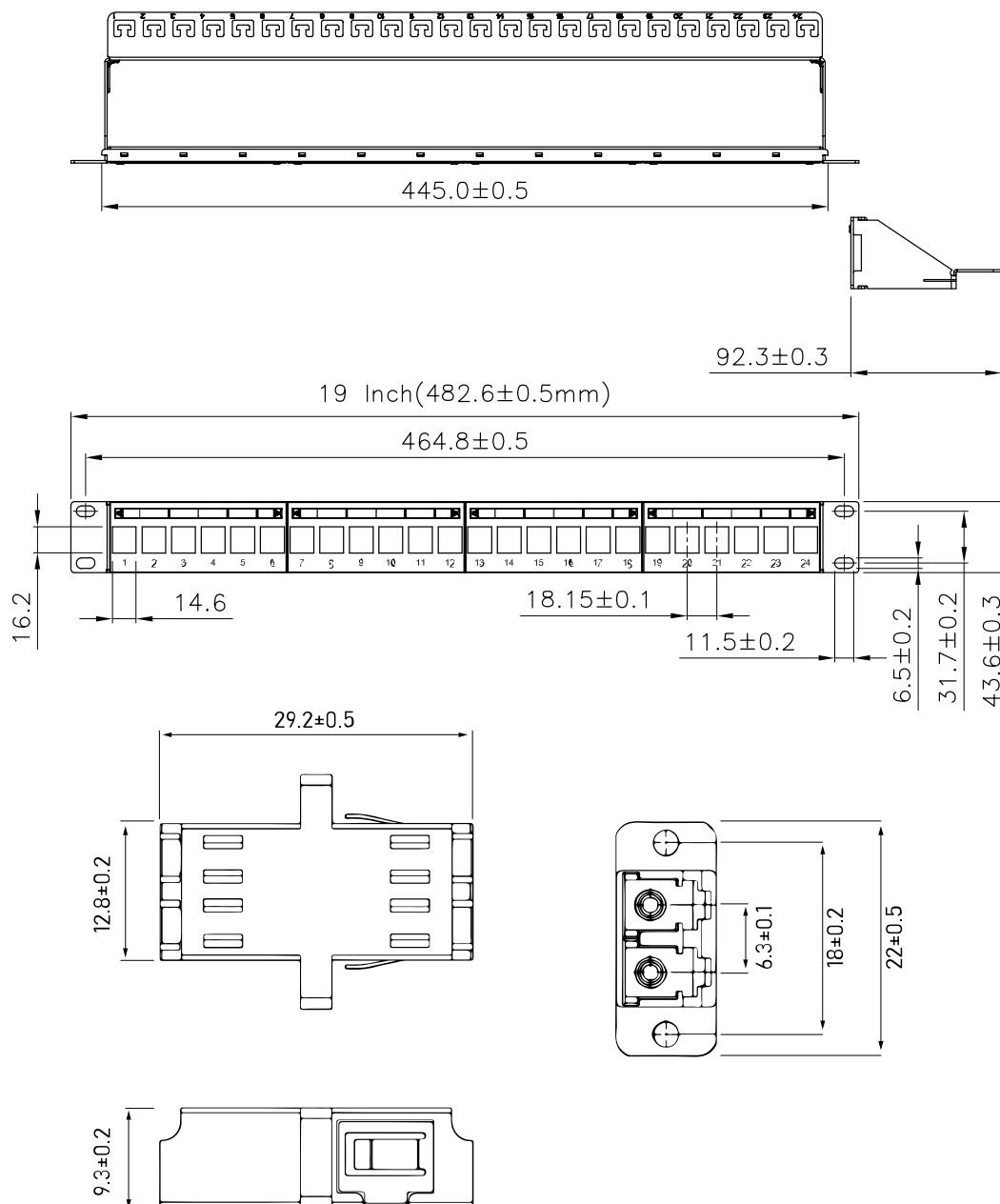
Specifications:

Panel Material: SPCC, 1.5mm thickness, Black Color

Dimensions: 3.6" x 1.71" x 19.14" (92.3 x 43.5 x 486.2mm)

Weight: 0.25kg

Finish: Painted, Black (RAL9005)



GT-LCDS-KCHDPPR1U-24B

LC Duplex Singlemode, Rack Mount 1U- 24 Port Aqua



The GigaTech Products GT-LCDS-KCHDPPR1U-24A provides a rugged 1U rack mount solution for high density fiber termination. Constructed from 1.5mm cold-rolled carbon steel, it features 24 LC Duplex ports to create a complete system for connectivity . Designed to be applied in LANs housing, optical communication, FTDD, and data center cabling these LC Fiber Patch Panels offer a flexible solution to proper cable management, ease of maintenance, and cost efficient fiber deployment. As with all GigaTech products, these panels are tested for quality and reliability and are covered by our standard Lifetime Warranty.

Features

- 1U Rack Mountable
- TIA/EIA-568.3-D Adapter Colors
- Up to 24 LC duplex connections
- Tool-less adapter removal
- Mounts to standard 19" EIA Rack

Compliance

- RoHS Compliant
- ISO9001
- TIA/EIA-568-C.3

Applications:

- Network Management

Specifications

| | | | |
|---------------------|----------------------|--------------------|--------------|
| Port Count | 24 | Rack Spaces | 1U |
| Material | SPCC Steel | Loaded | Yes |
| Adapter Type | LC Duplex Singlemode | Fiber Mode | OS2 9/125µm |
| Installation | EIA 19" Rack Rails | Cable Entry | Front & Rear |
| Dimensions | 12x 43.5 x 486.2mm | Mount Type | Rack Mount |

GT-LCDS-KCHDPPR1U-24B

LC Duplex Singlemode, Rack Mount 1U- 24 Port Aqua

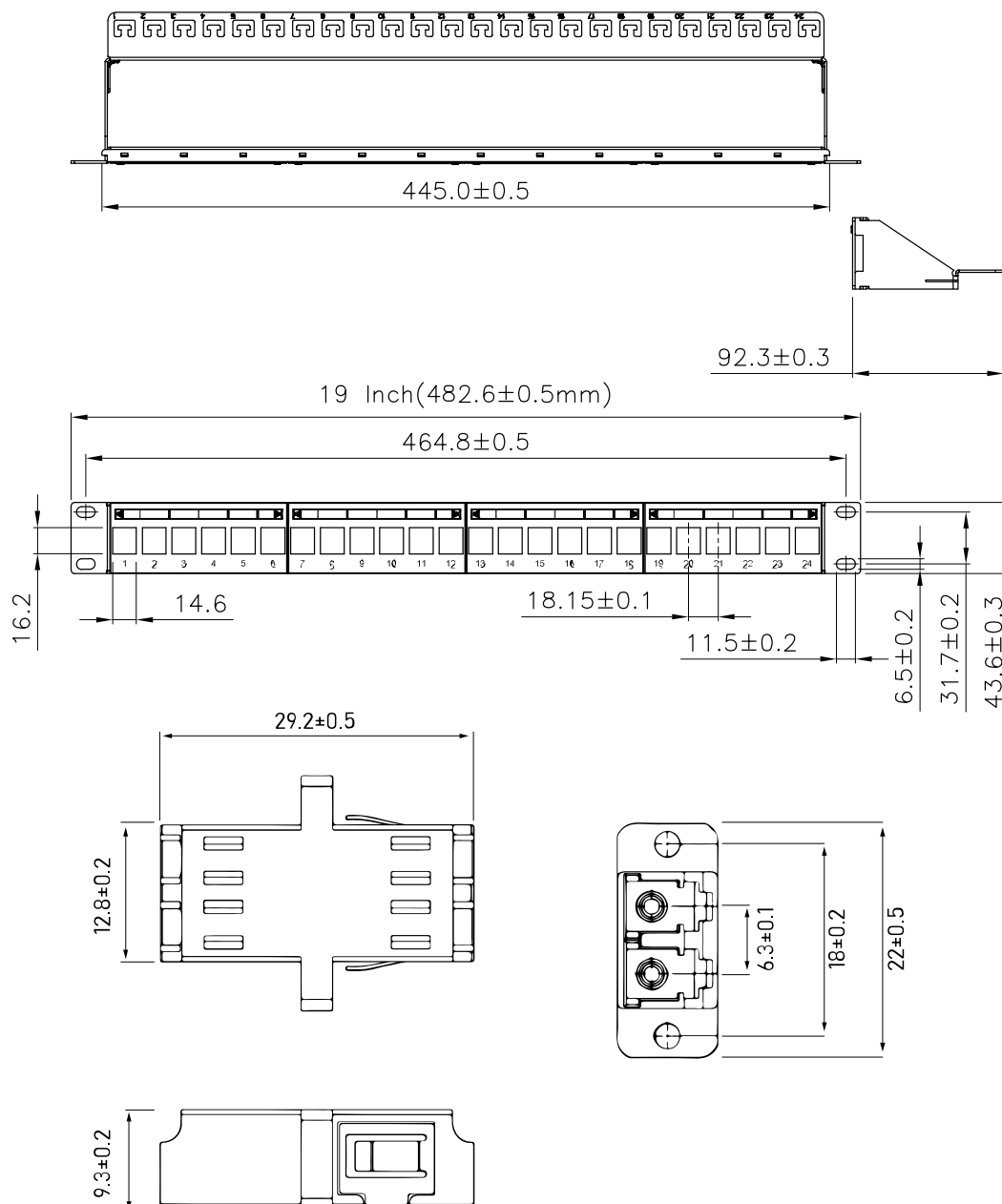
Specifications:

Panel Material: SPCC, 1.5mm thickness, Black Color

Dimensions: 3.6" x 1.71" x 19.14" (92.3 x 43.5 x 486.2mm)

Weight: 0.25kg

Finish: Painted, Black (RAL9005)



GT-LCDM-KCHDPPR2U-48A

LC Duplex Multimode, Rack Mount 2U- 48 Port Aqua



The GigaTech Products GT-LCDM-KCHDPPR2U-48A provides a rugged 1U rack mount solution for high density fiber termination. Constructed from 1.5mm cold-rolled carbon steel, it features 48 LC Duplex ports to create a complete system for connectivity. Designed to be applied in LANs housing, optical communication, FTTH, and data center cabling these LC Fiber Patch Panels offer a flexible solution to proper cable management, ease of maintenance, and cost efficient fiber deployment. As with all GigaTech products, these panels are tested for quality and reliability and are covered by our standard Lifetime Warranty.

Features

- 2U Rack Mountable
- TIA/EIA-568.3-D Adapter Colors
- Up to 48 LC duplex connections
- Tool-less adapter removal
- Mounts to standard 19" EIA Rack

Compliance

- RoHS Compliant
- ISO9001
- TIA/EIA-568-C.3

Applications:

- Network Management

Specifications

| | | | |
|---------------------|---------------------|--------------------|--------------------|
| Port Count | 48 | Rack Spaces | 2U |
| Material | SPCC Steel | Loaded | Yes |
| Adapter Type | LC Duplex MMF | Fiber Mode | OM4 (OM3) 50/125µm |
| Installation | EIA 19" Rack Rails | Cable Entry | Front & Rear |
| Dimensions | 12 x 87.6 x 486.2mm | Mount Type | Rack Mount |

GT-LCDM-KCHDPPR2U-48A

LC Duplex Multimode, Rack Mount 2U- 48 Port Aqua

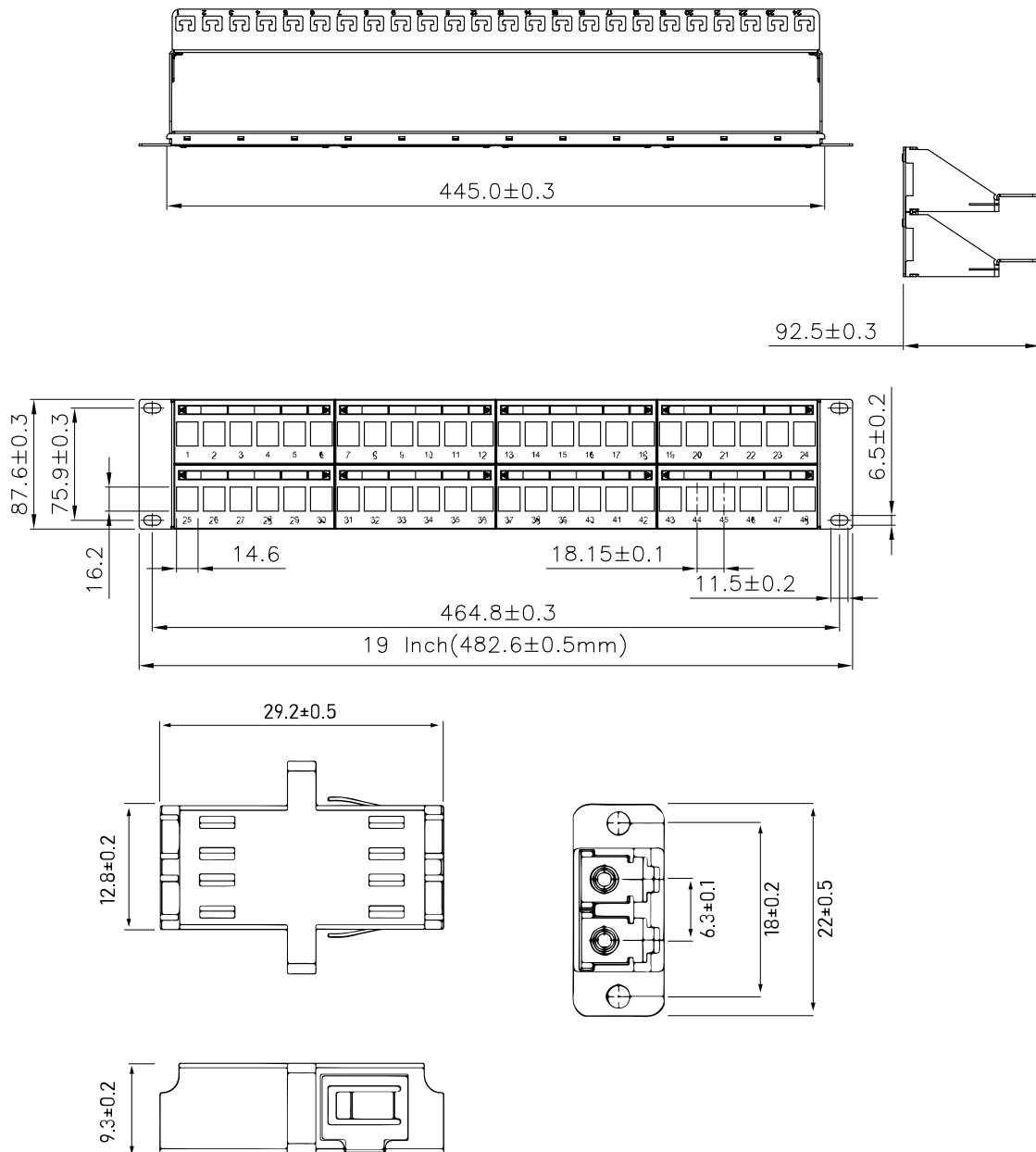
Specifications:

Panel Material: SPCC, 1.5mm thickness, Black Color

Dimensions: 3.6" x 3.45" x 19.14" (92.3 x 87.6 x 486.2mm)

Weight: 0.25kg

Finish: Painted, Black (RAL9005)



GT-LCDS-KCHDPPR2U-48B

LC Duplex Singlemode, Rack Mount 2U- 48 Port Blue



The GigaTech Products GT-LCDM-KCHDPPR2U-48B provides a rugged 1U rack mount solution for high density fiber termination. Constructed from 1.5mm cold-rolled carbon steel, it features 48 LC Duplex ports to create a complete system for connectivity . Designed to be applied in LANs housing, optical communication, FTTH, and data center cabling these LC Fiber Patch Panels offer a flexible solution to proper cable management, ease of maintenance, and cost efficient fiber deployment. As with all GigaTech products, these panels are tested for quality and reliability and are covered by our standard Lifetime Warranty.

Features

- 2U Rack Mountable
- TIA/EIA-568.3-D Adapter Colors
- Up to 48 LC duplex connections
- Tool-less adapter removal
- Mounts to standard 19" EIA Rack

Compliance

- RoHS Compliant
- ISO9001
- TIA/EIA-568-C.3

Applications:

- Network Management

Specifications

| | | | |
|---------------------|----------------------|--------------------|--------------|
| Port Count | 48 | Rack Spaces | 2U |
| Material | SPCC Steel | Loaded | Yes |
| Adapter Type | LC Duplex Singlemode | Fiber Mode | OS2 9/125µm |
| Installation | EIA 19" Rack Rails | Cable Entry | Front & Rear |
| Dimensions | 12 x 87.6 x 486.2mm | Mount Type | Rack Mount |

GT-LCDS-KCHDPPR2U-48B

LC Duplex Singlemode, Rack Mount 2U- 48 Port Blue

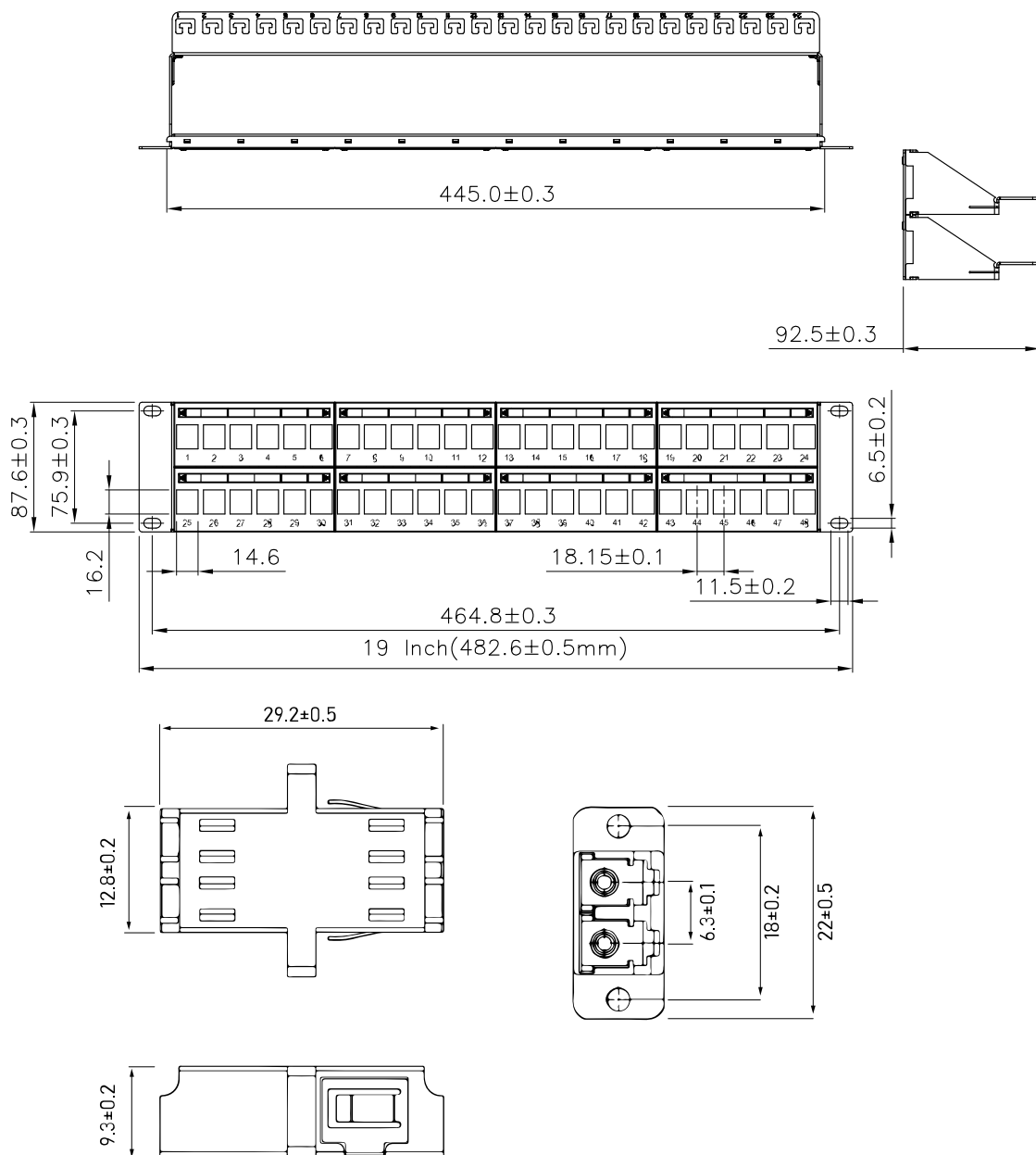
Specifications:

Panel Material: SPCC, 1.5mm thickness, Black Color

Dimensions: 3.6" x 3.45" x 19.14" (92.3 x 87.6 x 486.2mm)

Weight: 0.25kg

Finish: Painted, Black (RAL9005)





Panels & Enclosures

Fiber Enclosures that Fit Your Space

Maximize space and minimize effort with GigaTech's flexible fiber enclosures. Available in standard 1U, our fiber enclosure also come in 2U and 4U configurations for high density applications. The convenient removeable sliding lid makes for easy internal access. Like all GigaTech products, our fiber enclosures are rigorously tested for quality and reliability and backed by our exceptional customer service.

1U
SOLUTIONS



GT-PNL1U-3S



GT-ENC1U-3S

2U
SOLUTIONS



GT-ENC2U-6S

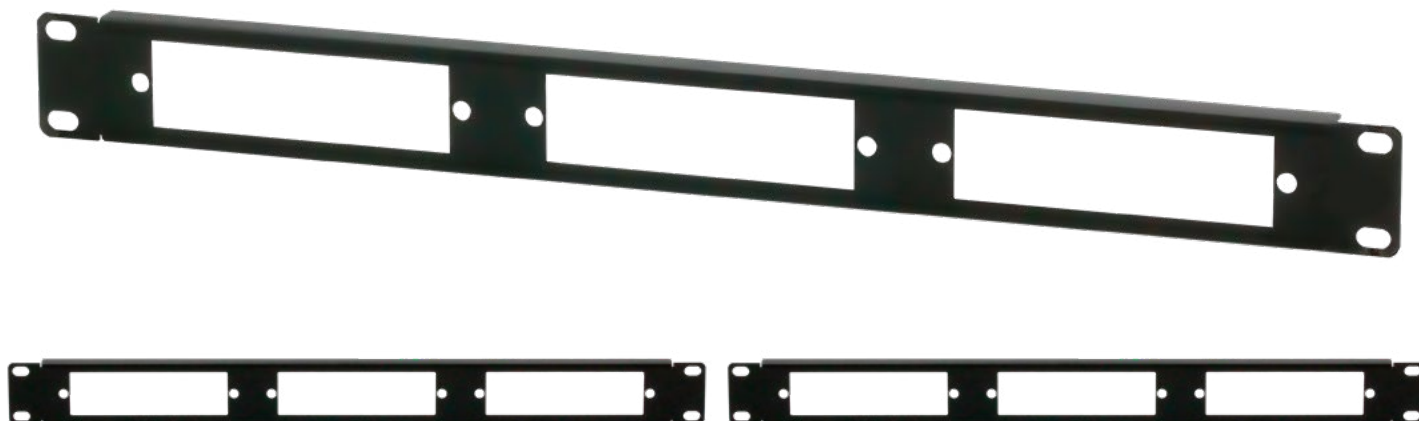
4U
SOLUTIONS



GT-ENC4U-12S

GT-PNL1U-3S

Panel, Rack Mountable 1U- 3 Slot



The GigaTech Products **GT-PNL1U-3S** provides a rugged 1U rack mount solution for high density fiber termination. Constructed from 1.5mm cold-rolled carbon steel, it features 3 pass-through ports for the easy installation of FHD fiber adapter plates and cassettes. As with all GigaTech products, these panels are tested for quality and reliability and are covered by our standard Lifetime Warranty.

Features

- 1U Rack Mountable
- Modular design
- Up to 3 FHD Plates/Cassettes
- Tool-less adapter removal
- Mounts to standard 19" EIA Rack

Compliance

- RoHS Compliant
- ISO9001
- TIA/EIA-568-C.3

Applications:

- FHD Plates & Cassettes

Specifications

| | | | |
|---------------------|--------------------|--------------------|------------------------------|
| Product Type | Fiber Patch Panel | Rack Spaces | 1U |
| Material | SPCC Steel | Loaded | Unloaded |
| Door Type | None | Mount Type | Rack Mount |
| Installation | EIA 19" Rack Rails | Cable Entry | Side & Rear |
| Dimensions | 12x 43.5 x 486.2mm | Application | Accepts FHD Panels/Cassettes |

GT-PNL1U-3S

Panel, Rack Mountable 1U- 3 Slot

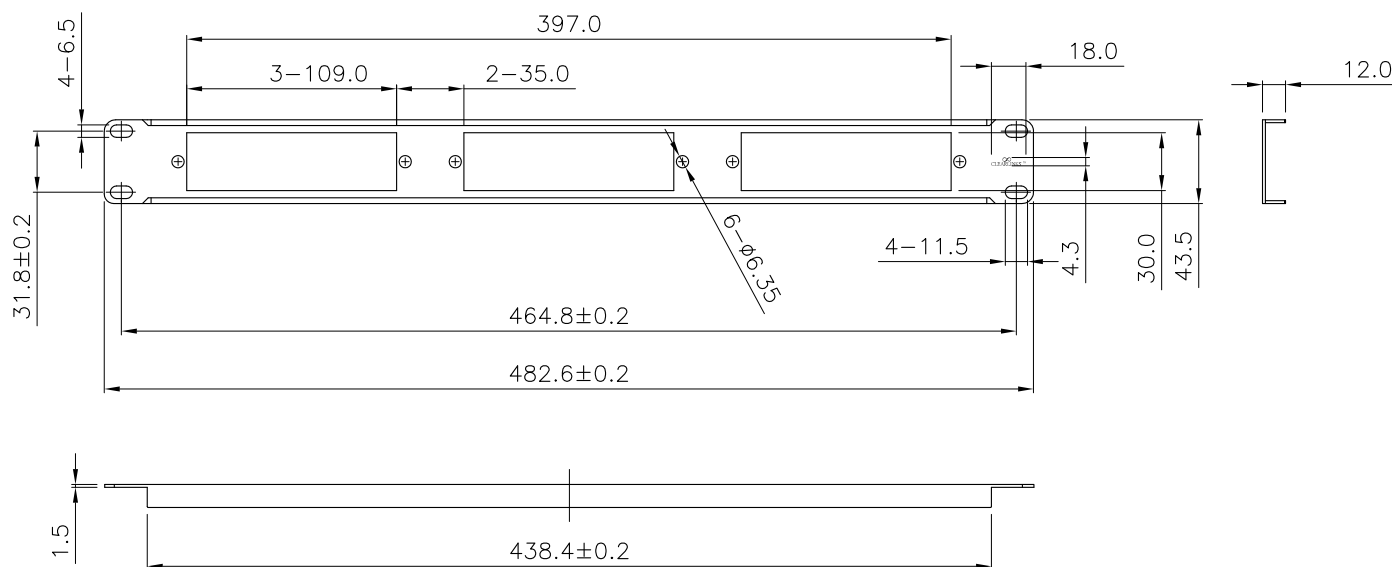
Specifications:

Panel Material: SPCC, 1.5mm thickness, Black Color

Dimensions: 0.47" x 1.71" x 19.14" (12.0 x 43.5 x 486.2mm)

Weight: 0.25kg

Finish: Painted, Black (RAL9005)



GT-ENC1U-3S

Enclosure, Rack Mountable, 1U- 3 Slot



The GigaTech Products **GT-ENC1U-3S** provides a rugged 1U rack mount solution for high density fiber termination. Constructed from 1.5mm cold-rolled carbon steel, it features 3 pass-through ports for the easy installation of FHD fiber adapter plates and cassettes. As with all GigaTech products, these enclosures are tested for quality and reliability and are covered by our standard Lifetime Warranty.

Features

- 1U Rack Mountable
- Modular design
- Up to 3 FHD Plates/Cassettes
- Dual window Hinged Door for Visibility
- Tool-less adapter removal
- Mounts to standard 19" EIA Rack

Compliance

- RoHS Compliant
- ISO9001
- TIA/EIA-568-C.3

Applications:

- FHD Plates & Cassettes

Specifications

| | | | |
|---------------------|------------------------|--------------------|------------------------------|
| Product Type | Fiber Patch Panel | Rack Spaces | 1U |
| Material | SPCC Steel | Loaded | Unloaded |
| Door Type | Hinged | Mount Type | Rack Mount |
| Installation | EIA 19" Rack Rails | Cable Entry | Side & Rear |
| Dimensions | 43.7 x 482.6 x 402.7mm | Application | Accepts FHD Panels/Cassettes |

GT-ENC1U-3S

Enclosure, Rack Mountable, 1U- 3 Slot

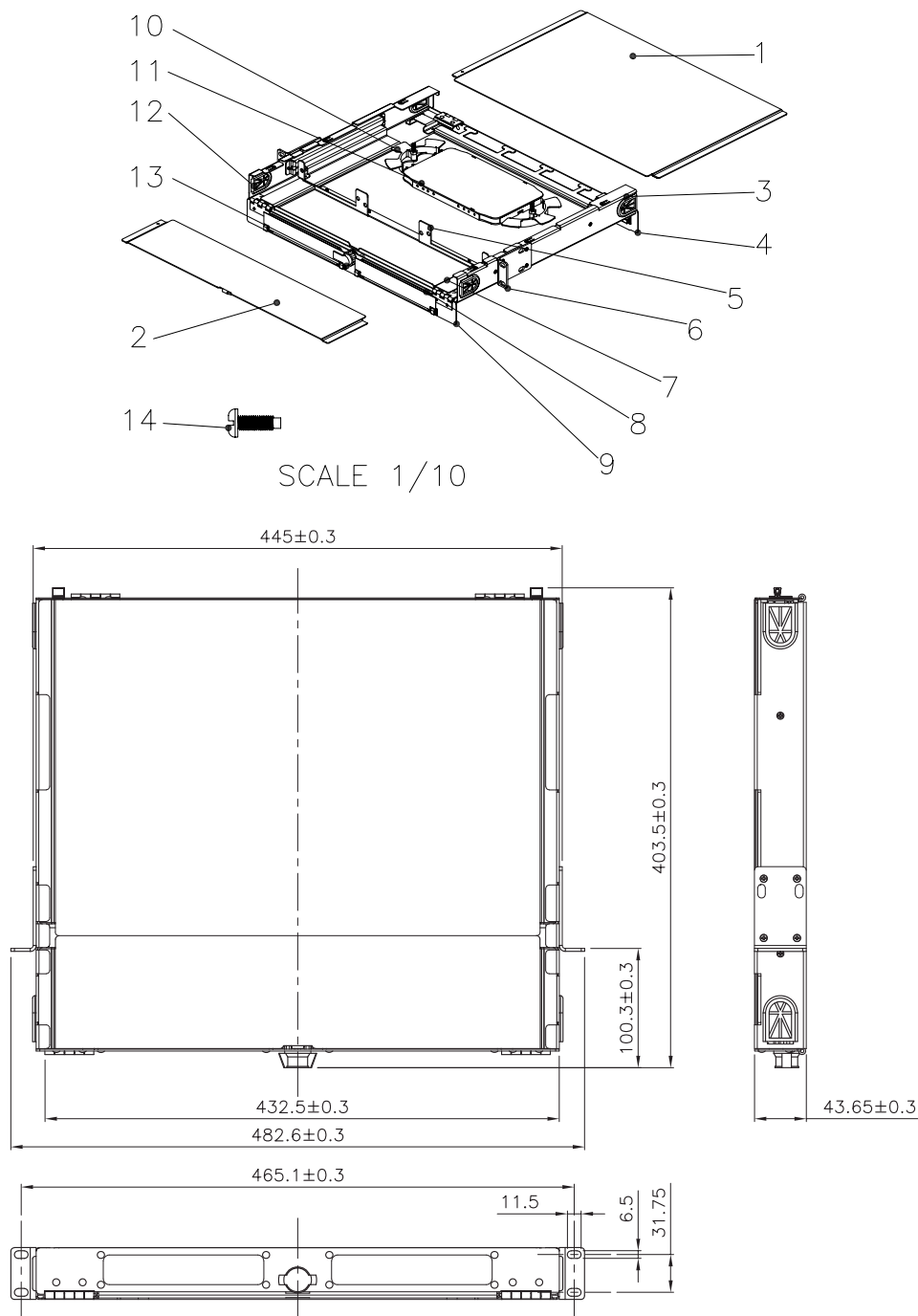
Specifications:

Panel Material: SPCC, 1.5mm thickness, Black Color

Dimensions: 19.0" x 15.89" x 1.72" (482.6 x 403.5 x 43.65mm)

Weight: 5.82kg

Finish: Painted, Black (RAL9005)



GT-ENC2U-6S

Enclosure, Rack Mountable, 2U- 6 Slot



The GigaTech Products **GT-ENC2U-6S** provides a rugged 2U rack mount solution for high density fiber termination. Constructed from 1.5mm cold-rolled carbon steel, it features 6 pass-through ports for the easy installation of FHD fiber adapter plates and cassettes. As with all GigaTech products, these enclosures are tested for quality and reliability and are covered by our standard Lifetime Warranty.

Features

- 2U Rack Mountable
- Modular design
- Up to 6 FHD Plates/Cassettes
- Dual window Hinged Door for Visibility
- Tool-less adapter removal
- Mounts to standard 19" EIA Rack

Compliance

- RoHS Compliant
- ISO9001
- TIA/EIA-568-C.3

Applications:

- FHD Plates & Cassettes

Specifications

| | | | |
|---------------------|------------------------|--------------------|------------------------------|
| Product Type | Fiber Patch Panel | Rack Spaces | 2U |
| Material | SPCC Steel | Loaded | Unloaded |
| Door Type | Hinged | Mount Type | Rack Mount |
| Installation | EIA 19" Rack Rails | Cable Entry | Side & Rear |
| Dimensions | 43.7 x 482.6 x 402.7mm | Application | Accepts FHD Panels/Cassettes |

www.gigatechproducts.com

GT-ENC2U-6S

Enclosure, Rack Mountable, 2U- 6 Slot

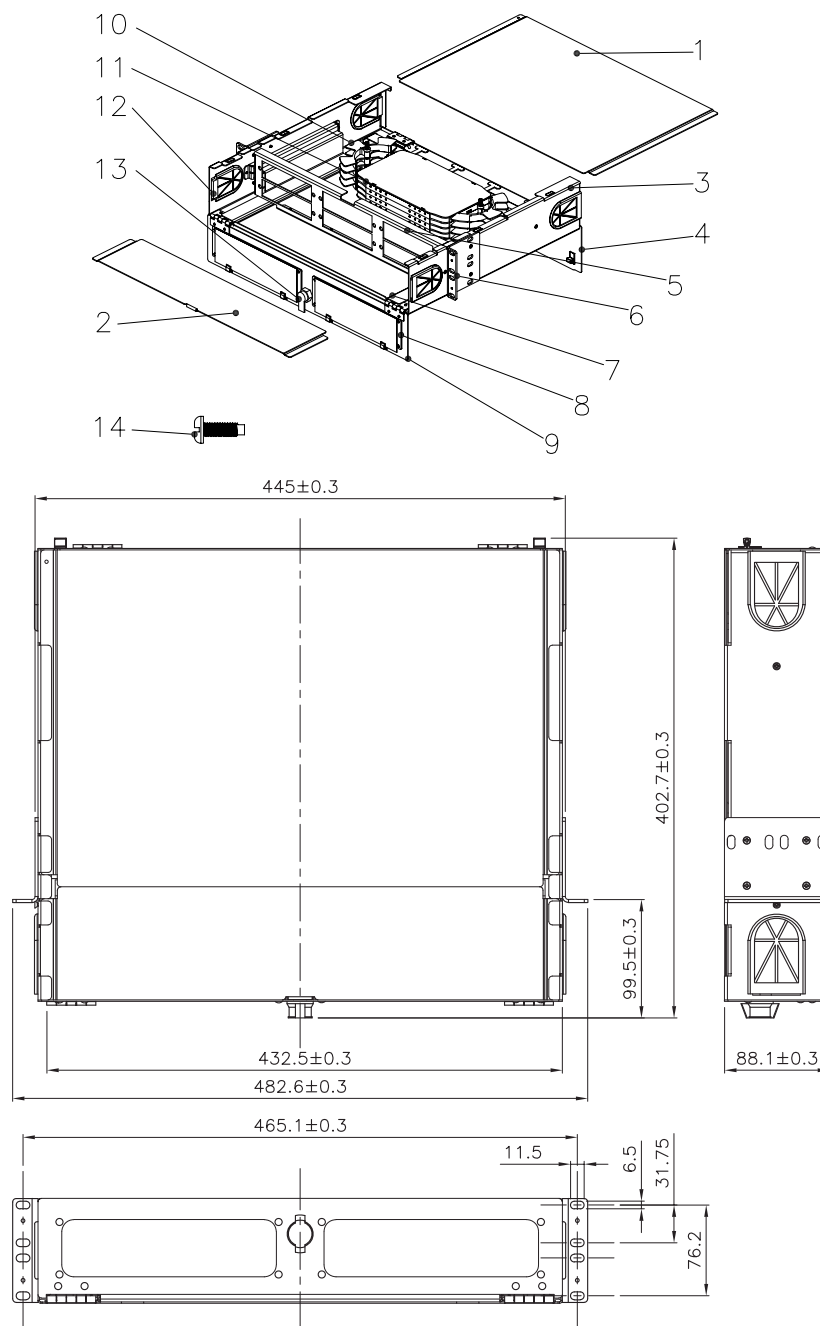
Specifications:

Panel Material: SPCC, 1.5mm thickness, Black Color

Dimensions: 19.0" x 15.89" x 1.72" (482.6 x 403.5 x 43.65mm)

Weight: 5.82kg

Finish: Painted, Black (RAL9005)



GT-ENC4U-12S

Enclosure, Rack Mountable, 4U- 12 Slot



The GigaTech Products **GT-ENC4U-12S** provides a rugged 4U rack mount solution for high density fiber termination. Constructed from 1.5mm cold-rolled carbon steel, it features 12 pass-through ports for the easy installation of FHD fiber adapter plates and cassettes. As with all GigaTech products, these enclosures are tested for quality and reliability and are covered by our standard Lifetime Warranty.

Features

- 2U Rack Mountable
- Modular design
- Up to 6 FHD Plates/Cassettes
- Dual window Hinged Door for Visibility
- Tool-less adapter removal
- Mounts to standard 19" EIA Rack

Compliance

- RoHS Compliant
- ISO9001
- TIA/EIA-568-C.3

Applications:

- FHD Plates & Cassettes

Specifications

| | | | |
|---------------------|------------------------|--------------------|------------------------------|
| Product Type | Fiber Patch Panel | Rack Spaces | 4U |
| Material | SPCC Steel | Loaded | Unloaded |
| Door Type | Hinged | Mount Type | Rack Mount |
| Installation | EIA 19" Rack Rails | Cable Entry | Side & Rear |
| Dimensions | 178.95 x 475 x 396.9mm | Application | Accepts FHD Panels/Cassettes |

www.gigatechproducts.com

GT-ENC4U-12S

Enclosure, Rack Mountable, 4U- 12 Slot

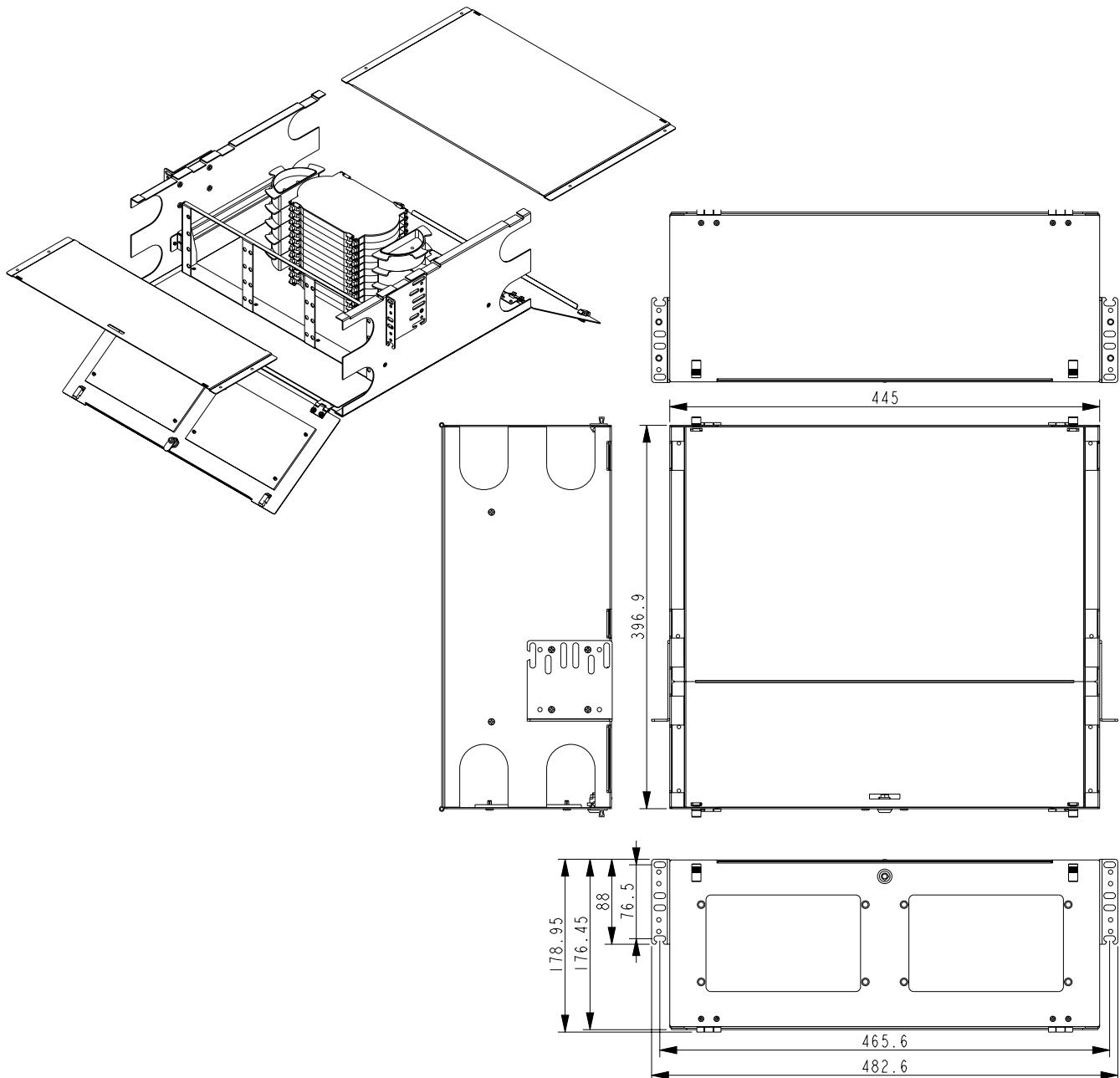
Specifications:

Panel Material: SPCC, 1.5mm thickness, Black Color

Dimensions: 445 x 396.9 x 178.95mm

Weight: 9.07kg

Finish: Painted, Black (RAL9005)



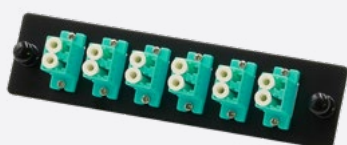


Fiber Plates Adapters

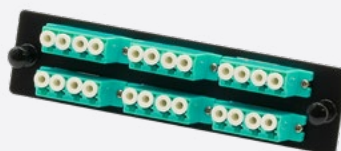
Future Proof with Fiber Optic Patch and Adapter Plates

Simplify connections and cable management with our versatile selection of fiber optic patch panels and fiber patch panel adapters. Available in a wide range of customizable options, our fiber patch panels integrate seamlessly with current and future network architecture. Fiber breakout options provide a path for speeds up to 100G, single-location ports make managing cables easier, and panel adapters support cross connections.

MULTIMODE
SOLUTIONS



GT-PLT-LCDM-6

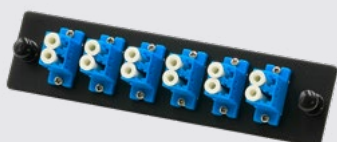


GT-PLT-LCDM-12



GT-PLT-SCDM-6

SINGLEMODE
SOLUTIONS



GT-PLT-LCDS-6

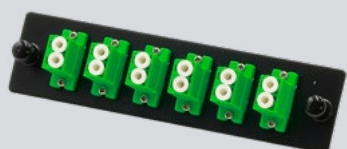


GT-PLT-LCDS-12



GT-PLT-SCDS-6

APC
SINGLEMODE
SOLUTIONS



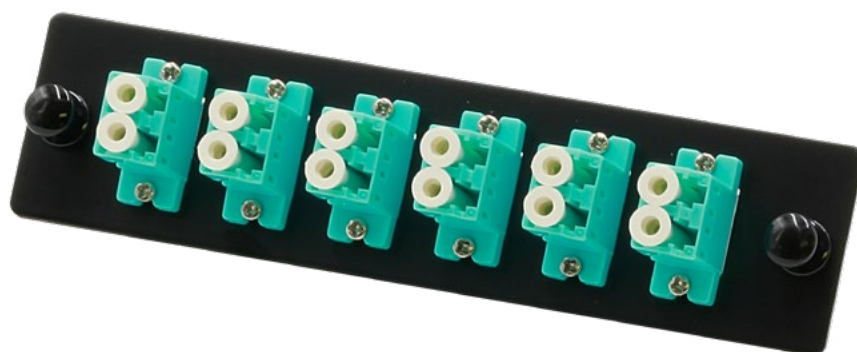
GT-PLT-LCADS-6



GT-PLT-SCADS-12

GT-PLT-LCDM-6

Fiber Plate 6x LC Duplex Multimode



The GigaTech Products **GT-PLT-LCDM-6** fiber plate adapter provides versatile solution for high density fiber termination. Constructed from 1.5mm cold-rolled carbon steel, it features 6 LC Duplex ports and supports up to 12 OM4 multimode fibers. As with all GigaTech products, these plate adapters are tested for quality and reliability and are covered by our standard Lifetime Warranty.

Features

- 6x LC Duplex Connectors
- Tool-less installation & removal
- Compatible with all LGX panels & enclosures
- Standard TIA/EIA-568.3-D color code

Compliance

- RoHS Compliant
- ISO9001
- TIA/EIA-568-C.3

Applications:

- FHD Rackmount Fiber Management

Specifications

| | | | |
|-----------------------|-----------------------|------------------------|------------------------|
| Adapter Type | LC Duplex | Fiber Mode | OM4 50/125µm Multimode |
| Ports | 6 | Fiber Count | Up to 12 |
| Plate Material | SPCC Steel | Sleeve Material | Zirconia Ceramic |
| Dimensions | 129.8 x 31.6 x 34.5mm | Application | FHD Enclosures |

GT-PLT-LCDM-6

Fiber Plate 6x LC Duplex Multimode

Specifications:

Panel Material: SPCC, 1.5mm thickness

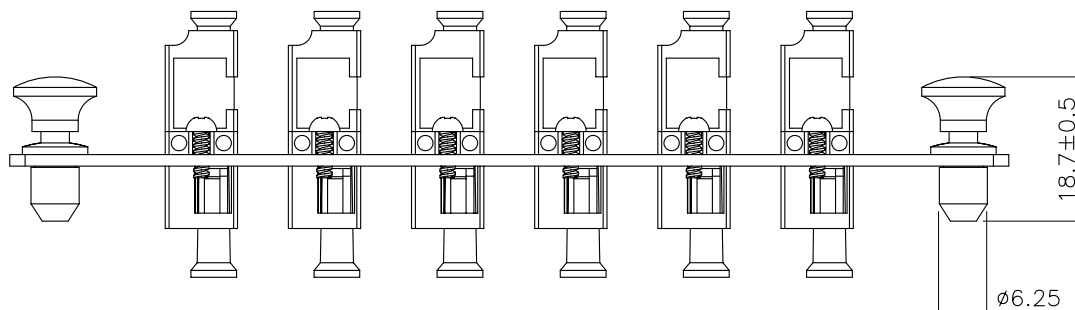
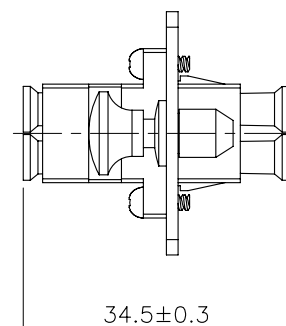
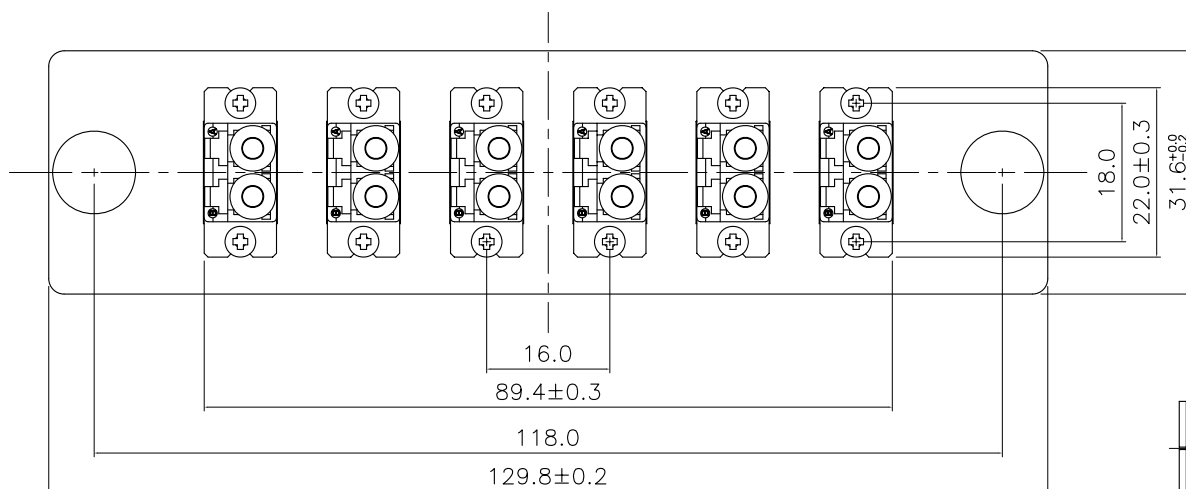
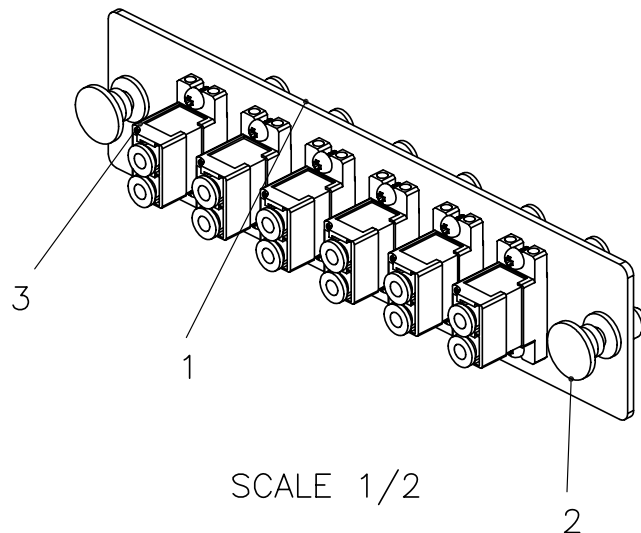
Dimensions: 5.11" x 1.24" x 1.36" (129.8 x 31.6 x 34.5mm)

Weight: 0.06kg

Finish: Painted, Black (RAL9005)

Accessory: 2 pcs, Snap Rivet, Male Nylon/Female PC

Adaptor: 6x LC Duplex



GT-PLT-LCDS-6

Fiber Plate 6x LC Duplex Singlemode



The GigaTech Products **GT-PLT-LCDS-6** fiber plate adapter provides versatile solution for high density fiber termination. Constructed from 1.5mm cold-rolled carbon steel, it features 6 LC Duplex ports and supports up to 12 OS2 singlemode fibers. As with all GigaTech products, these plate adapters are tested for quality and reliability and are covered by our standard Lifetime Warranty.

Features

- 6x LC Duplex Connectors
- Tool-less installation & removal
- Compatible with all LGX panels & enclosures
- Standard TIA/EIA-568.3-D color code

Compliance

- RoHS Compliant
- ISO9001
- TIA/EIA-568-C.3

Applications:

- FHD Rackmount Fiber Management

Specifications

| | | | |
|-----------------------|-----------------------|------------------------|------------------|
| Adapter Type | LC Duplex | Fiber Mode | OS2 9/125μm |
| Ports | 6 | Fiber Count | Up to 12 |
| Plate Material | SPCC Steel | Sleeve Material | Zirconia Ceramic |
| Dimensions | 129.8 x 31.6 x 34.5mm | Application | FHD Enclosures |

GT-PLT-LCDS-6

Fiber Plate 6x LC Duplex Singlemode

Specifications:

Panel Material: SPCC, 1.5mm thickness

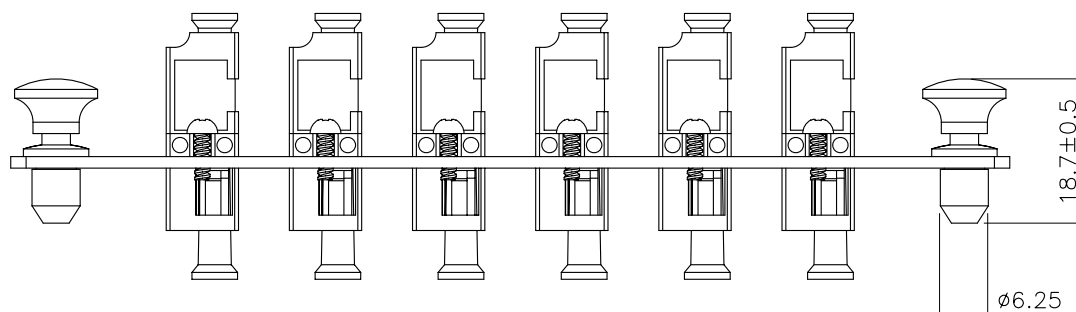
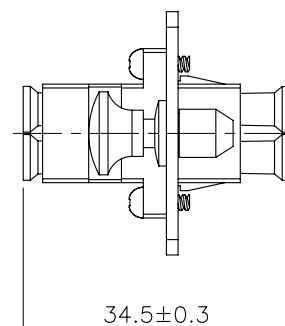
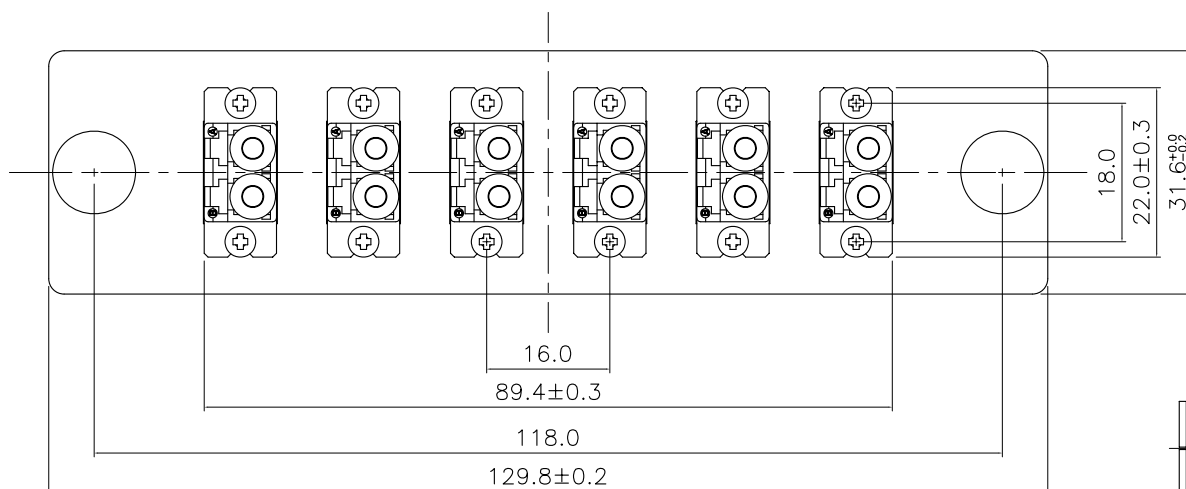
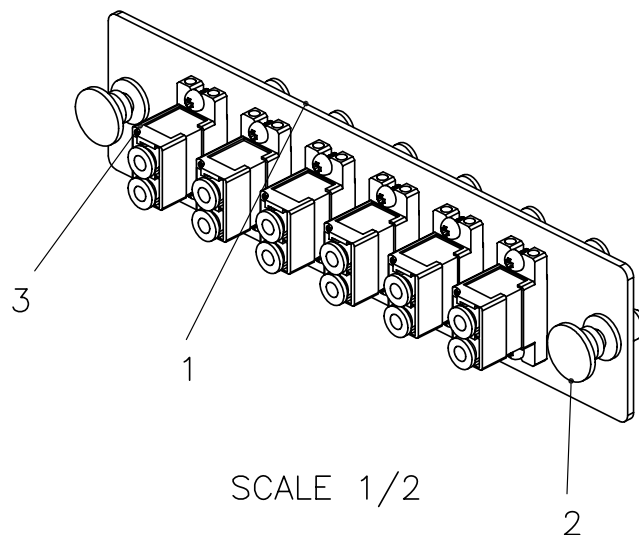
Dimensions: 5.11" x 1.24" x 1.36" (129.8 x 31.6 x 34.5mm)

Weight: 0.06kg

Finish: Painted, Black (RAL9005)

Accessory: 2 pcs, Snap Rivet, Male Nylon/Female PC

Adaptor: 6x LC Duplex



GT-PLT-LCADS-6

Fiber Plate 6x LC-APC Duplex Singlemode



The GigaTech Products **GT-PLT-LCADS-6** fiber plate adapter provides versatile solution for high density fiber termination. Constructed from 1.5mm cold-rolled carbon steel, it features 6 LC Duplex ports and supports up to 12 OS2 singlemode fibers. As with all GigaTech products, these plate adapters are tested for quality and reliability and are covered by our standard Lifetime Warranty.

Features

- 6x LC-APC Duplex Connectors
- Tool-less installation & removal
- Compatible with all LGX panels & enclosures
- Standard TIA/EIA-568.3-D color code

Compliance

- RoHS Compliant
- ISO9001
- TIA/EIA-568-C.3

Applications:

- FHD Rackmount Fiber Management

Specifications

| | | | |
|-----------------------|-----------------------|------------------------|------------------|
| Adapter Type | LC-APC Duplex | Fiber Mode | OS2 9/125μm |
| Ports | 6 | Fiber Count | Up to 12 |
| Plate Material | SPCC Steel | Sleeve Material | Zirconia Ceramic |
| Dimensions | 129.8 x 31.6 x 34.5mm | Application | FHD Enclosures |

GT-PLT-LCDM-6

Fiber Plate 6x LC Duplex Multimode

Specifications:

Panel Material: SPCC, 1.5mm thickness

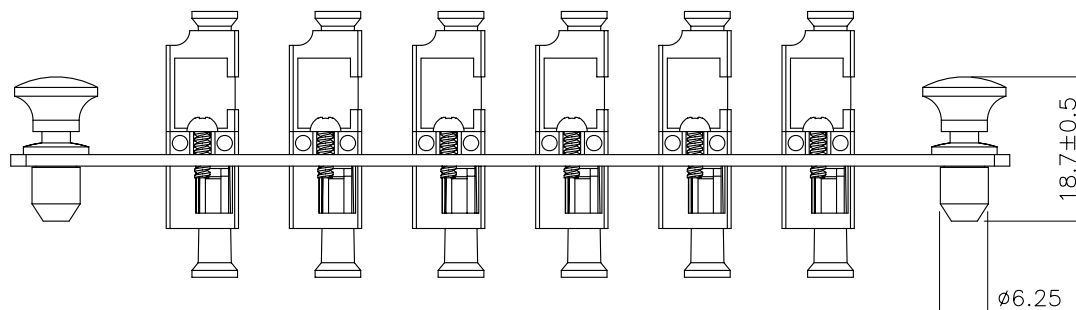
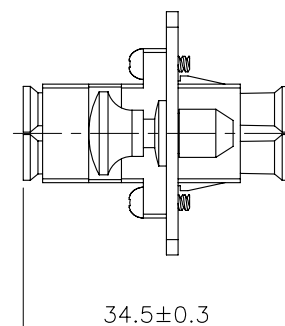
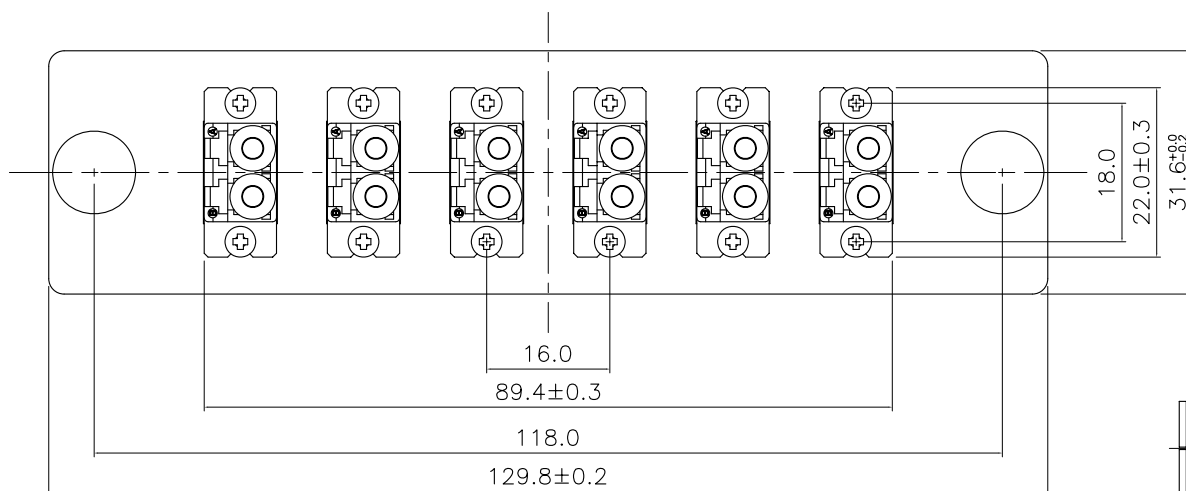
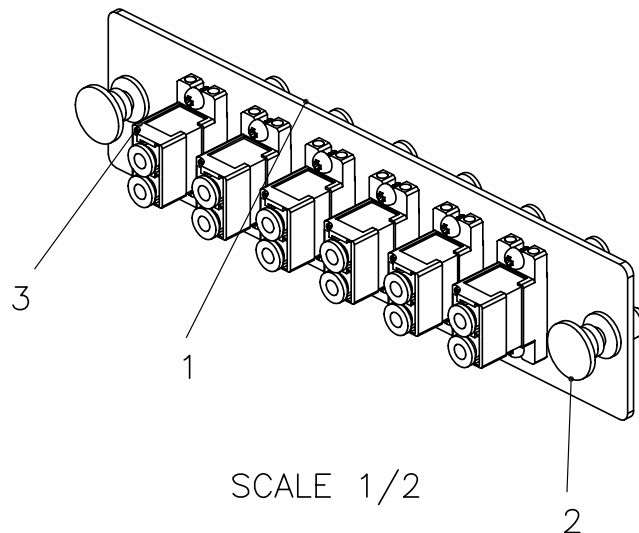
Dimensions: 5.11" x 1.24" x 1.36" (129.8 x 31.6 x 34.5mm)

Weight: 0.06kg

Finish: Painted, Black (RAL9005)

Accessory: 2 pcs, Snap Rivet, Male Nylon/Female PC

Adaptor: 6x LC-APC Duplex



GT-PLT-LCDM-12

Fiber Plate 12x LC Duplex Multimode



The GigaTech Products **GT-PLT-LCDM-12** fiber plate adapter provides versatile solution for high density fiber termination. Constructed from 1.5mm cold-rolled carbon steel, it features 12 LC Duplex ports and supports up to 24 OM4 multimode fibers. As with all GigaTech products, these plate adapters are tested for quality and reliability and are covered by our standard Lifetime Warranty.

Features

- 12x LC Duplex Connectors
- Tool-less installation & removal
- Compatible with all LGX panels & enclosures
- Standard TIA/EIA-568.3-D color code

Compliance

- RoHS Compliant
- ISO9001
- TIA/EIA-568-C.3

Applications:

- FHD Rackmount Fiber Management

Specifications

| | | | |
|-----------------------|---------------------|------------------------|------------------------|
| Adapter Type | LC Duplex | Fiber Mode | OM4 50/125µm Multimode |
| Ports | 12 | Fiber Count | Up to 24 |
| Plate Material | SPCC Steel | Sleeve Material | Zirconia Ceramic |
| Dimensions | 129.8 x 31.6 x 33mm | Application | FHD Enclosures |

GT-PLT-LCDM-12

Fiber Plate 12x LC Duplex Multimode

Specifications:

Panel Material: SPCC, 1.5mm thickness

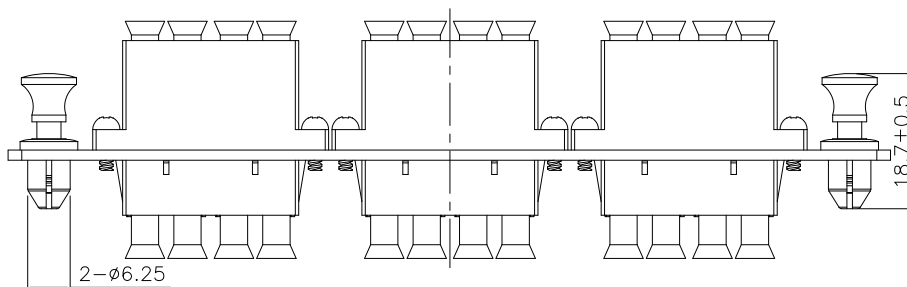
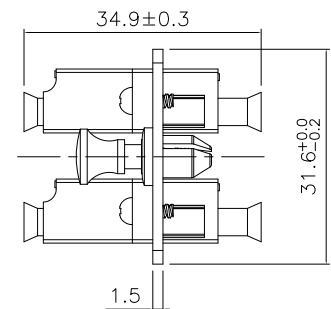
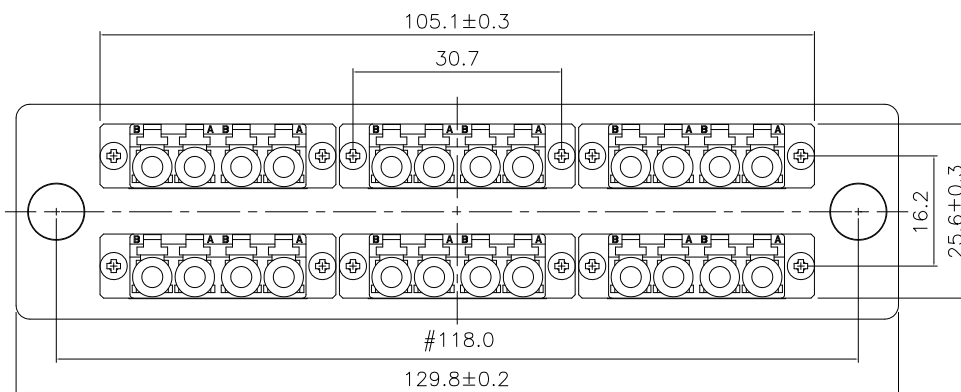
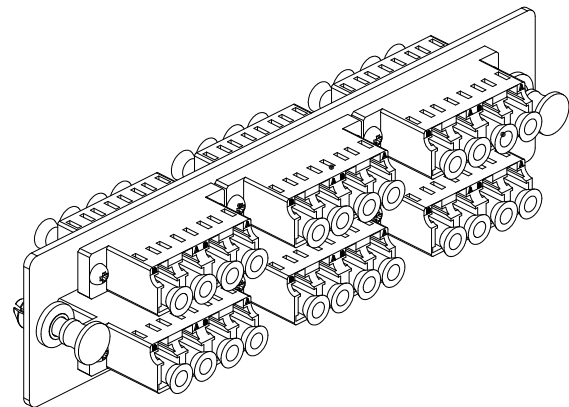
Dimensions: 5.11" x 1.24" x 1.3" (129.8 x 31.6 x 33mm)

Weight: 0.065kg

Finish: Painted, Black (RAL9005)

Accessory: 2 pcs, Snap Rivet, Male Nylon/Female PC

Adaptor: 12x LC Duplex



GT-PLT-LCDS-12

Fiber Plate 12x LC Duplex Singlemode



The GigaTech Products **GT-PLT-LCDS-12** fiber plate adapter provides versatile solution for high density fiber termination. Constructed from 1.5mm cold-rolled carbon steel, it features 12 LC Duplex ports and supports up to 24 OS2 singlemode fibers. As with all GigaTech products, these plate adapters are tested for quality and reliability and are covered by our standard Lifetime Warranty.

Features

- 12x LC Duplex Connectors
- Tool-less installation & removal
- Compatible with all LGX panels & enclosures
- Standard TIA/EIA-568.3-D color code

Compliance

- RoHS Compliant
- ISO9001
- TIA/EIA-568-C.3

Applications:

- FHD Rackmount Fiber Management

Specifications

| | | | |
|-----------------------|---------------------|------------------------|------------------|
| Adapter Type | LC Duplex | Fiber Mode | OS2 9/125µm |
| Ports | 12 | Fiber Count | Up to 24 |
| Plate Material | SPCC Steel | Sleeve Material | Zirconia Ceramic |
| Dimensions | 129.8 x 31.6 x 33mm | Application | FHD Enclosures |

GT-PLT-LCDS-12

Fiber Plate 12x LC Duplex Singlemode

Specifications:

Panel Material: SPCC, 1.5mm thickness

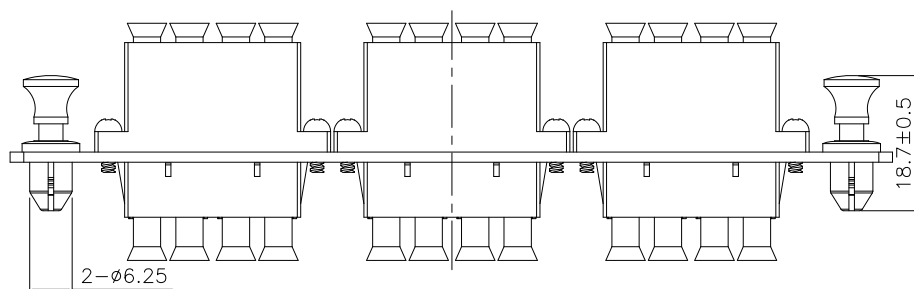
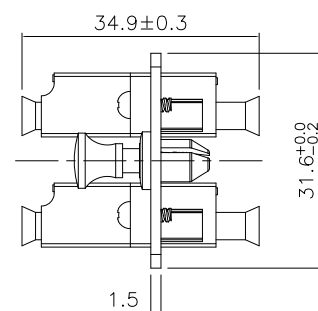
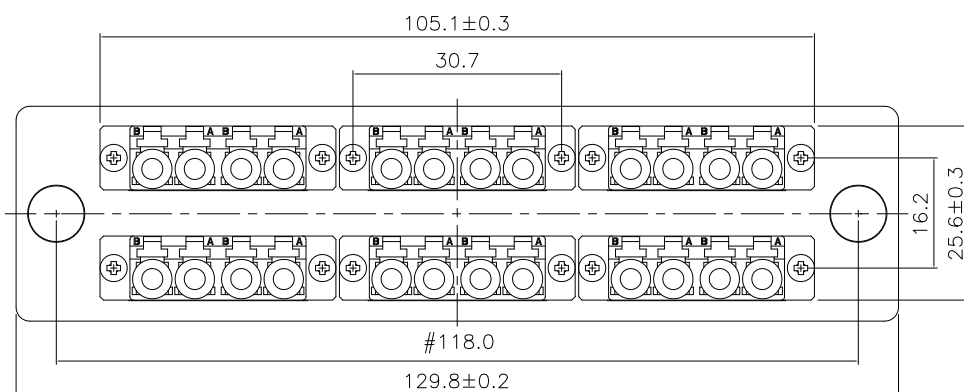
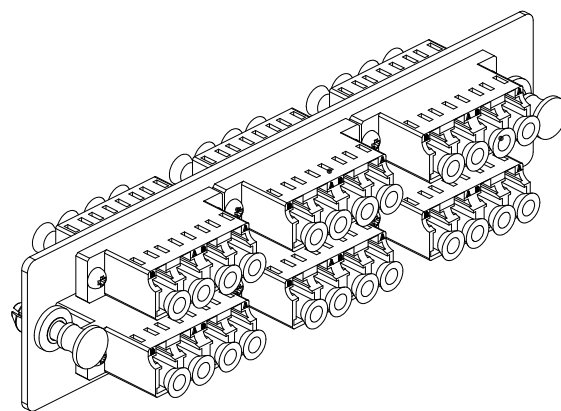
Dimensions: 5.11" x 1.24" x 1.3" (129.8 x 31.6 x 33mm)

Weight: 0.065kg

Finish: Painted, Black (RAL9005)

Accessory: 2 pcs, Snap Rivet, Male Nylon/Female PC

Adaptor: 12x LC Duplex



GT-PLT-SCDM-6

Fiber Plate 6x SC Duplex Multimode



The GigaTech Products **GT-PLT-SCDM-6** fiber plate adapter provides versatile solution for high density fiber termination. Constructed from 1.5mm cold-rolled carbon steel, it features 6 SC Duplex ports and supports up to 12 OM4 multimode fibers. As with all GigaTech products, these plate adapters are tested for quality and reliability and are covered by our standard Lifetime Warranty.

Features

- 6x SC Duplex Connectors
- Tool-less installation & removal
- Compatible with all LGX panels & enclosures
- Standard TIA/EIA-568.3-D color code

Compliance

- RoHS Compliant
- ISO9001
- TIA/EIA-568-C.3

Applications:

- FHD Rackmount Fiber Management

Specifications

| | | | |
|-----------------------|---------------------|------------------------|------------------------|
| Adapter Type | SC Duplex | Fiber Mode | OM4 50/125µm Multimode |
| Ports | 6 | Fiber Count | Up to 12 |
| Plate Material | SPCC Steel | Sleeve Material | Zirconia Ceramic |
| Dimensions | 129.8 x 31.6 x 33mm | Application | FHD Enclosures |

GT-PLT-SCDM-6

Fiber Plate 6x SC Duplex Multimode

Specifications:

Panel Material: SPCC, 1.5mm thickness

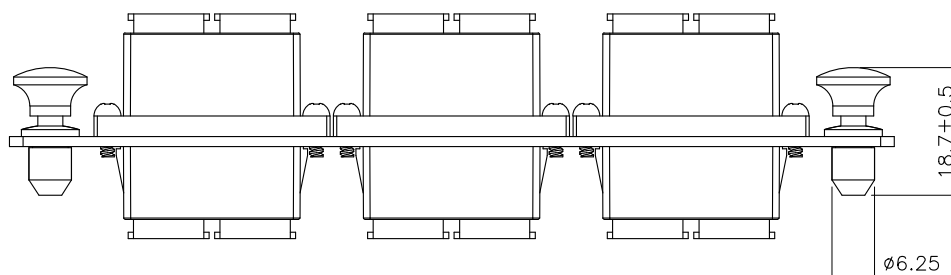
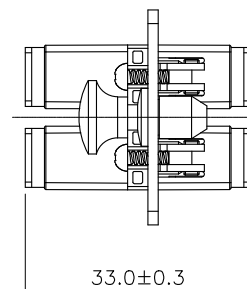
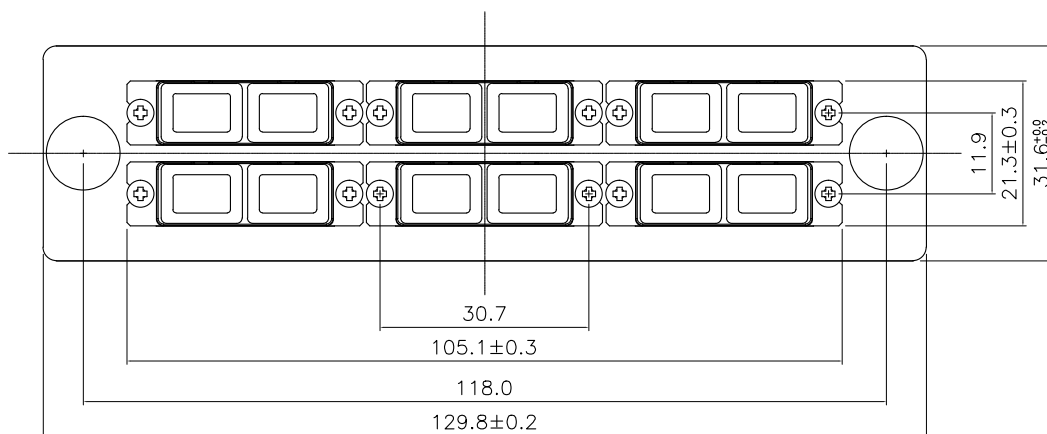
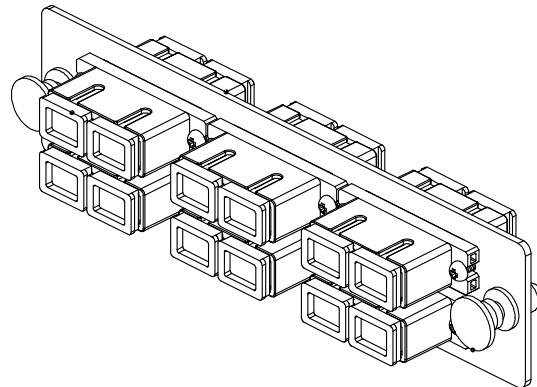
Dimensions: 5.11" x 1.24" x 1.3" (129.8 x 31.6 x 33mm)

Weight: 0.065kg

Finish: Painted, Black (RAL9005)

Accessory: 2 pcs, Snap Rivet, Male Nylon/Female PC

Adaptor: 6x SC Duplex



GT-PLT-SCDS-6

Fiber Plate 6x SC Duplex Singlemode



The GigaTech Products **GT-PLT-SCDS-6** fiber plate adapter provides versatile solution for high density fiber termination. Constructed from 1.5mm cold-rolled carbon steel, it features 6 SC Duplex ports and supports up to 12 OS2 singlemode fibers. As with all GigaTech products, these plate adapters are tested for quality and reliability and are covered by our standard Lifetime Warranty.

Features

- 6x SC Duplex Connectors
- Tool-less installation & removal
- Compatible with all LGX panels & enclosures
- Standard TIA/EIA-568.3-D color code

Compliance

- RoHS Compliant
- ISO9001
- TIA/EIA-568-C.3

Applications:

- FHD Rackmount Fiber Management

Specifications

| | | | |
|-----------------------|---------------------|------------------------|------------------|
| Adapter Type | SC Duplex | Fiber Mode | OS2 9/125μm |
| Ports | 6 | Fiber Count | Up to 12 |
| Plate Material | SPCC Steel | Sleeve Material | Zirconia Ceramic |
| Dimensions | 129.8 x 31.6 x 33mm | Application | FHD Enclosures |

GT-PLT-SCDS-6

Fiber Plate 6x SC Duplex Singlemode

Specifications:

Panel Material: SPCC, 1.5mm thickness

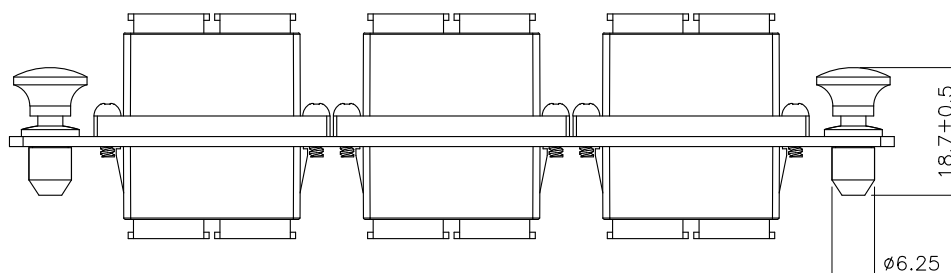
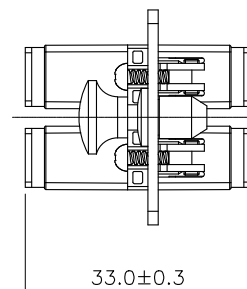
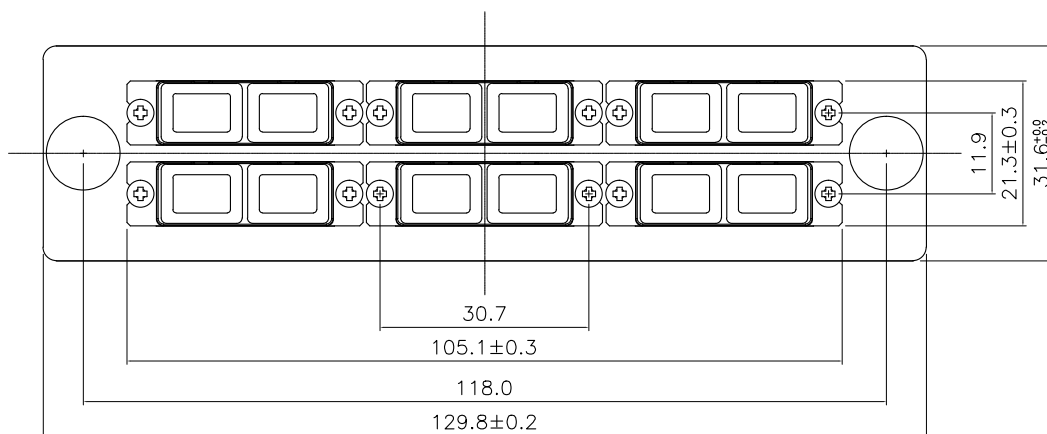
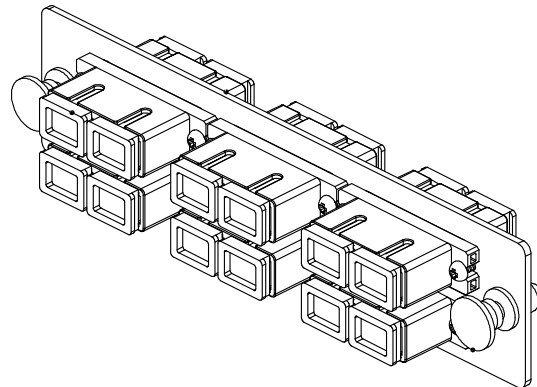
Dimensions: 5.11" x 1.24" x 1.3" (129.8 x 31.6 x 33mm)

Weight: 0.065kg

Finish: Painted, Black (RAL9005)

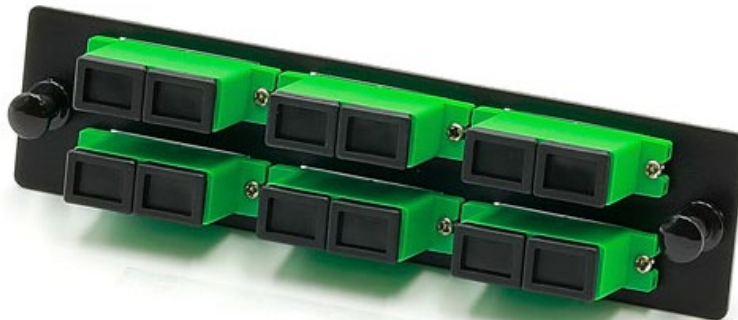
Accessory: 2 pcs, Snap Rivet, Male Nylon/Female PC

Adaptor: 6x SC Duplex



GT-PLT-SCADS-6

Fiber Plate 6x SC-APC Duplex Singlemode



The GigaTech Products **GT-PLT-SCADS-6** fiber plate adapter provides versatile solution for high density fiber termination. Constructed from 1.5mm cold-rolled carbon steel, it features 6 SC-APC Duplex ports and supports up to 12 OS2 singlemode fibers. As with all GigaTech products, these plate adapters are tested for quality and reliability and are covered by our standard Lifetime Warranty.

Features

- 6x SC-APC Duplex Connectors
- Tool-less installation & removal
- Compatible with all LGX panels & enclosures
- Standard TIA/EIA-568.3-D color code

Compliance

- RoHS Compliant
- ISO9001
- TIA/EIA-568-C.3

Applications:

- FHD Rackmount Fiber Management

Specifications

| | | | |
|-----------------------|---------------------|------------------------|------------------|
| Adapter Type | SC-APC Duplex | Fiber Mode | OS2 9/125μm |
| Ports | 6 | Fiber Count | Up to 12 |
| Plate Material | SPCC Steel | Sleeve Material | Zirconia Ceramic |
| Dimensions | 129.8 x 31.6 x 33mm | Application | FHD Enclosures |

GT-PLT-SCADS-6

Fiber Plate 6x SC-APC Duplex Singlemode

Specifications:

Panel Material: SPCC, 1.5mm thickness

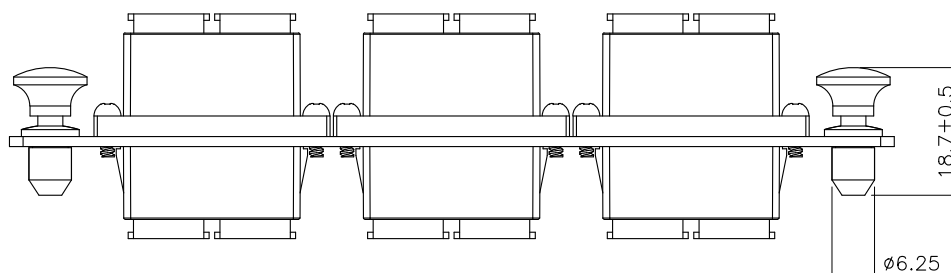
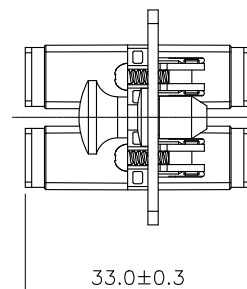
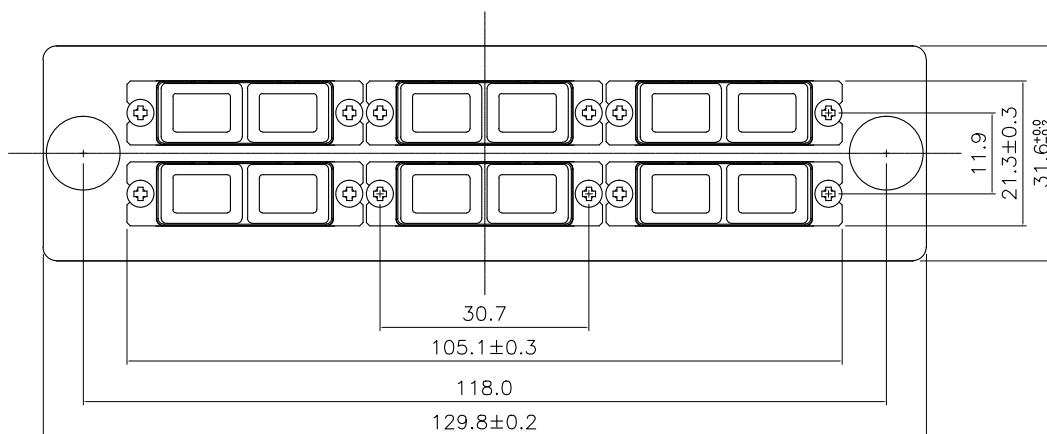
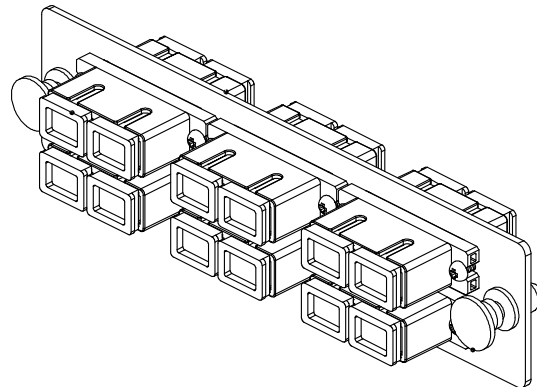
Dimensions: 5.11" x 1.24" x 1.3" (129.8 x 31.6 x 33mm)

Weight: 0.065kg

Finish: Painted, Black (RAL9005)

Accessory: 2 pcs, Snap Rivet, Male Nylon/Female PC

Adaptor: 6x SC-APC Duplex

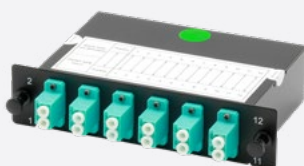


Fiber Cassette Adapters

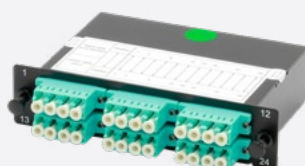
Fiber Cassettes Featuring Compact Design

Compact and durable, GigaTech fiber cassette modules feature MTP® to factory terminated fiber connections that offer plug-in simplicity. Ruggedly engineered with breakout assemblies inside an aluminum housing, our fiber cassette modules provide no-splice, high-density fiber termination in patch panels and enclosures for easier deployment and expansion. All cassettes come with a lifetime warranty for added confidence.

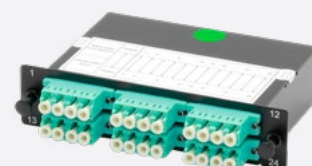
MULTIMODE
SOLUTIONS



GT-CAS-MPM-LC12



GT-CAS-MPM2-LC24



GT-CAS-MP24M-LC24

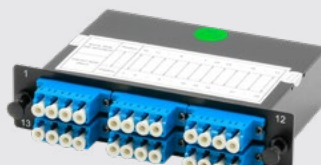
APC
SINGLEMODE
SOLUTIONS



GT-CAS-MPAM-LC12



GT-CAS-MPAM2-LC24



GT-CAS-MP24AM-LC24

SPLICE
TRAYS



GT-ENC-SPLICETRAY

GT-CAS-MPM-LC12

Fiber Cassette MTP Male to 12xLC/UPC



The GigaTech Products **GT-CAS-MPM-LC12** fiber cassette adapter provides a versatile solution for high density fiber termination. Compact and durable, these fiber cassette modules feature MTP® to factory-terminated fiber connections that offer plug-in simplicity. Ruggedly engineered with breakout assemblies inside an aluminum housing, our fiber cassette modules provide no-splice, high-density fiber termination in patch panels and enclosures for easier deployment and expansion. All fiber cassette adaptors are covered by our standard Lifetime Warranty.

Features

- 6x LC Duplex Connectors
- Tool-less installation & removal
- Compatible with all LGX panels & enclosures
- Standard TIA/EIA-568.3-D color code

Compliance

- RoHS Compliant
- ISO9001
- TIA/EIA-568-C.3

Applications:

- FHD Rackmount Fiber Management

Specifications

| | | | |
|-----------------------|-------------------|------------------------|------------------------|
| Adapter Type | LC Duplex | Fiber Mode | OM4 50/125µm Multimode |
| LC Ports | 6 | MTP Ports | 1x 12-Pin |
| Plate Material | SPCC Steel | Sleeve Material | Zirconia Ceramic |
| Dimensions | 30.0 x 130 x 75mm | Application | FHD Enclosures |

Polarity Options

| | |
|-----------------------------|---|
| GT-CAS-MPM-LC12-AMM | Fiber Cassette MTP Male to 12xLC/UPC Method-A Multimode |
| GT-CAS-MPM-LC12-AFMM | Fiber Cassette MTP Male to 12xLC/UPC Method-A Flipped Multimode |
| GT-CAS-MPM-LC12-BUMM | Fiber Cassette MTP Male to 12xLC/UPC Method-B Universal Multimode |

GT-CAS-MPM-LC12-AMM

Fiber Cassette MTP Male to 12xLC/UPC Method-A Multimode

Specifications:

Panel Material: SPCC, 1.5mm thickness

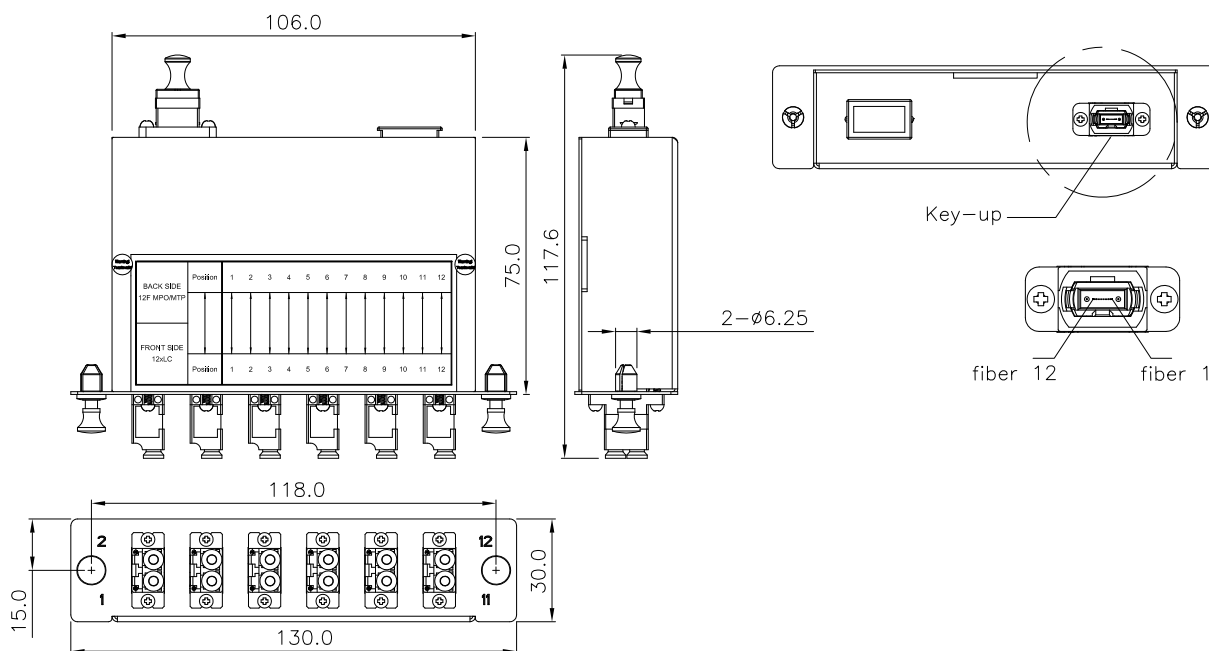
Dimensions: 1.18" x 5.12" x 2.95" (30.0 x 130 x 75mm)

Weight: 0.23kg

Finish: Painted, Black (RAL9005)

Accessory: 2 pcs, Snap Rivet, Male Nylon/Female PC

Adaptor: 6x LC Duplex



Method A

| LC | Straight Version | MTP |
|----|------------------|-----|
| 1 | → | 1 |
| 2 | → | 2 |
| 3 | → | 3 |
| 4 | → | 4 |
| 5 | → | 5 |
| 6 | → | 6 |
| 7 | → | 7 |
| 8 | → | 8 |
| 9 | → | 9 |
| 10 | → | 10 |
| 11 | → | 11 |
| 12 | → | 12 |

| LC Fiber Number | Jacket Color | Fiber Position | MTP Fiber Number |
|-----------------|--------------|----------------|------------------|
| Fiber 1 | Blue | B | Fiber 1 |
| Fiber 2 | Orange | A | Fiber 2 |
| Fiber 3 | Green | B | Fiber 3 |
| Fiber 4 | Brown | A | Fiber 4 |
| Fiber 5 | Gray | B | Fiber 5 |
| Fiber 6 | White | A | Fiber 6 |
| Fiber 7 | Red | B | Fiber 7 |
| Fiber 8 | Black | A | Fiber 8 |
| Fiber 9 | Yellow | B | Fiber 9 |
| Fiber 10 | Purple | A | Fiber 10 |
| Fiber 11 | Pink | B | Fiber 11 |
| Fiber 12 | Aqua | A | Fiber 12 |

GT-CAS-MPM-LC12-AFMM

Fiber Cassette MTP Male to 12xLC/UPC Method-A Flipped Multimode

Specifications:

Panel Material: SPCC, 1.5mm thickness

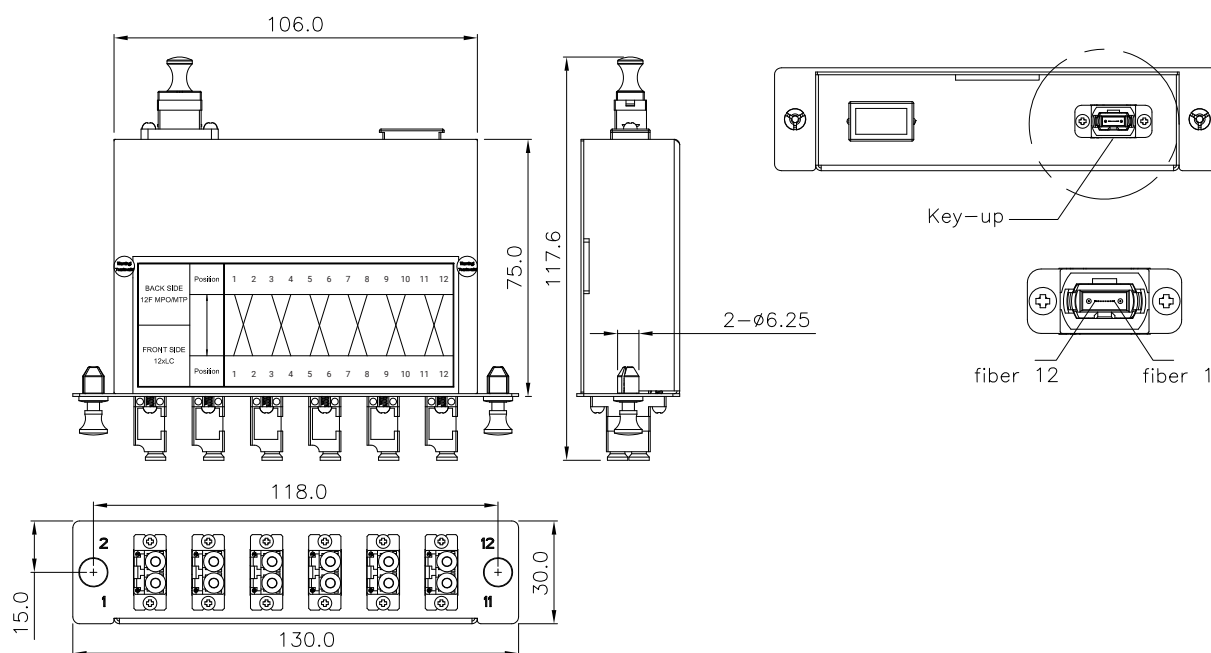
Dimensions: 1.18" x 5.12" x 2.95" (30.0 x 130 x 75mm)

Weight: 0.23kg

Finish: Painted, Black (RAL9005)

Accessory: 2 pcs, Snap Rivet, Male Nylon/Female PC

Adaptor: 6x LC Duplex



Method A Flipped

| LC | Pair Flip | MTP |
|----|-----------|-----|
| 1 | ↗ ↘ | 1 |
| 2 | ↖ ↙ | 2 |
| 3 | ↗ ↘ | 3 |
| 4 | ↖ ↙ | 4 |
| 5 | ↗ ↘ | 5 |
| 6 | ↖ ↙ | 6 |
| 7 | ↗ ↘ | 7 |
| 8 | ↖ ↙ | 8 |
| 9 | ↗ ↘ | 9 |
| 10 | ↖ ↙ | 10 |
| 11 | ↗ ↘ | 11 |
| 12 | ↖ ↙ | 12 |

| LC Fiber Number | Jacket Color | Fiber Position | MTP Fiber Number |
|--------------------|-----------------|-------------------|---------------------|
| Fiber 1 | Orange | B | Fiber 2 |
| Fiber 2 | Blue | A | Fiber 1 |
| Fiber 3 | Brown | B | Fiber 4 |
| Fiber 4 | Green | A | Fiber 3 |
| Fiber 5 | White | B | Fiber 6 |
| Fiber 6 | Gray | A | Fiber 5 |
| Fiber 7 | Black | B | Fiber 8 |
| Fiber 8 | Red | A | Fiber 7 |
| Fiber 9 | Purple | B | Fiber 10 |
| Fiber 10 | Yellow | A | Fiber 9 |
| Fiber 11 | Aqua | B | Fiber 12 |
| Fiber 12 | Pink | A | Fiber 11 |

GT-CAS-MPM-LC12-BUMM

Fiber Cassette MTP Male to 12xLC/UPC Method-B Universal Multimode

Specifications:

Panel Material: SPCC, 1.5mm thickness

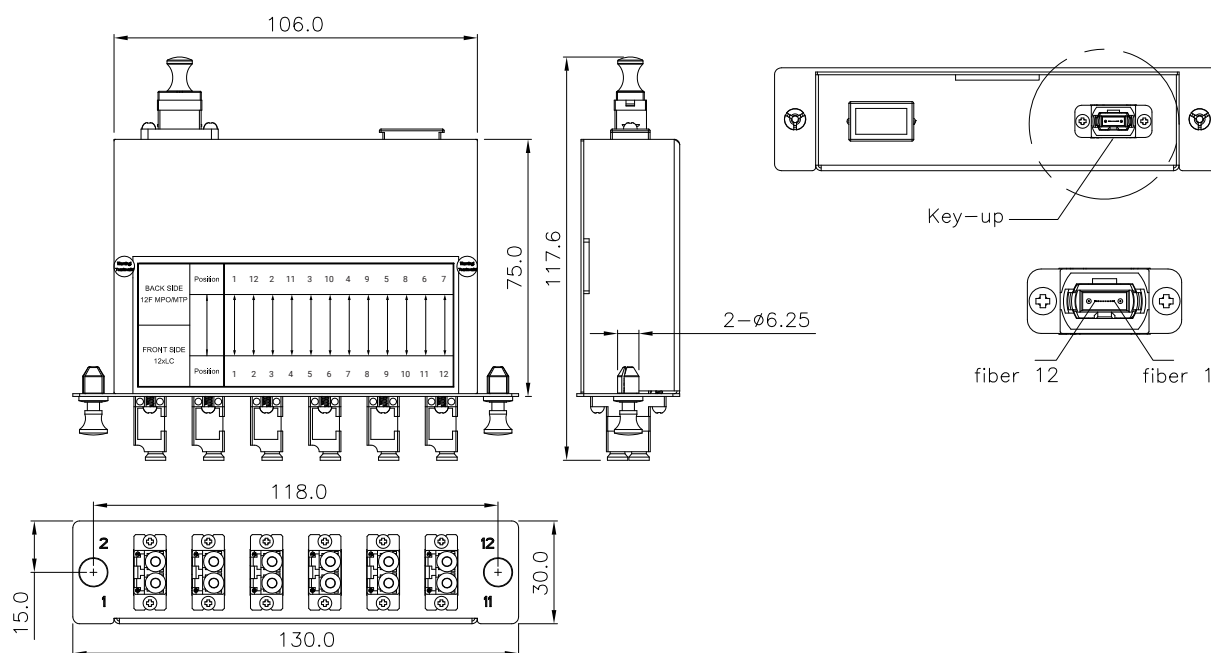
Dimensions: 1.18" x 5.12" x 2.95" (30.0 x 130 x 75mm)

Weight: 0.23kg

Finish: Painted, Black (RAL9005)

Accessory: 2 pcs, Snap Rivet, Male Nylon/Female PC

Adaptor: 6x LC Duplex



Method B Universal

| LC | B Universal | MTP |
|----|-------------|-----|
| 1 | → | 1 |
| 2 | → | 12 |
| 3 | → | 2 |
| 4 | → | 11 |
| 5 | → | 3 |
| 6 | → | 10 |
| 7 | → | 4 |
| 8 | → | 9 |
| 9 | → | 5 |
| 10 | → | 8 |
| 11 | → | 6 |
| 12 | → | 7 |

| LC Fiber Number | Jacket Color | Fiber Position | MTP Fiber Number |
|--------------------|-----------------|-------------------|---------------------|
| Fiber 1 | Blue | B | Fiber 1 |
| Fiber 2 | Aqua | A | Fiber 12 |
| Fiber 3 | Orange | B | Fiber 2 |
| Fiber 4 | Green | A | Fiber 11 |
| Fiber 5 | Violet | B | Fiber 3 |
| Fiber 6 | Brown | A | Fiber 10 |
| Fiber 7 | Red | B | Fiber 4 |
| Fiber 8 | Yellow | A | Fiber 9 |
| Fiber 9 | Gray | B | Fiber 5 |
| Fiber 10 | Black | A | Fiber 8 |
| Fiber 11 | White | B | Fiber 6 |
| Fiber 12 | Red | A | Fiber 7 |

GT-CAS-MPAM-LC12

Fiber Cassette MTP-APC Male to 12xLC/UPC Singlemode



The GigaTech Products **GT-CAS-MPAM-LC12** fiber cassette adapter provides a versatile solution for high density fiber termination. Compact and durable, these fiber cassette modules feature MTP® to factory-terminated fiber connections that offer plug-in simplicity. Ruggedly engineered with breakout assemblies inside an aluminum housing, our fiber cassette modules provide no-splice, high-density fiber termination in patch panels and enclosures for easier deployment and expansion. All fiber cassette adaptors are covered by our standard Lifetime Warranty.

Features

- 6x LC Duplex Connectors
- Tool-less installation & removal
- Compatible with all LGX panels & enclosures
- Standard TIA/EIA-568.3-D color code

Compliance

- RoHS Compliant
- ISO9001
- TIA/EIA-568-C.3

Applications:

- FHD Rackmount Fiber Management

Specifications

| | | | |
|-----------------------|-------------------|------------------------|------------------|
| Adapter Type | LC Duplex | Fiber Mode | OS2 9/125µm |
| LC Ports | 6 | MTP Ports | 1x 12-Pin APC |
| Plate Material | SPCC Steel | Sleeve Material | Zirconia Ceramic |
| Dimensions | 30.0 x 130 x 75mm | Application | FHD Enclosures |

Polarity Options

| | |
|------------------------------|--|
| GT-CAS-MPAM-LC12-ASM | Fiber Cassette MTP-APC Male to 12xLC/UPC Method-A Singlemode |
| GT-CAS-MPAM-LC12-AFSM | Fiber Cassette MTP-APC Male to 12xLC/UPC Method-A Flipped Singlemode |
| GT-CAS-MPAM-LC12-BUSM | Fiber Cassette MTP-APC Male to 12xLC/UPC Method-B Universal Singlemode |

GT-CAS-MPAM-LC12-ASM

Fiber Cassette MTP-APC Male to 12xLC/UPC Method-A Singlemode

Specifications:

Panel Material: SPCC, 1.5mm thickness

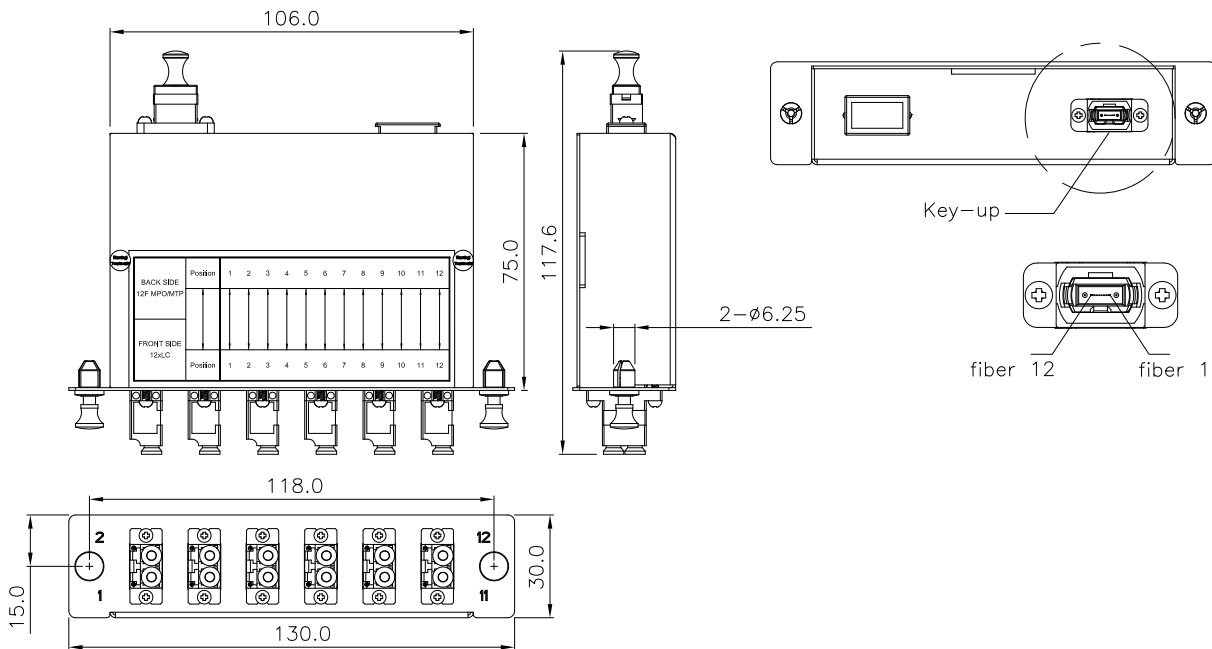
Dimensions: 1.18" x 5.12" x 2.95" (30.0 x 130 x 75mm)

Weight: 0.23kg

Finish: Painted, Black (RAL9005)

Accessory: 2 pcs, Snap Rivet, Male Nylon/Female PC

Adaptor: 6x LC Duplex



Method A

| LC | Straight Version | MTP |
|----|------------------|-----|
| 1 | → | 1 |
| 2 | → | 2 |
| 3 | → | 3 |
| 4 | → | 4 |
| 5 | → | 5 |
| 6 | → | 6 |
| 7 | → | 7 |
| 8 | → | 8 |
| 9 | → | 9 |
| 10 | → | 10 |
| 11 | → | 11 |
| 12 | → | 12 |

| LC Fiber Number | Jacket Color | Fiber Position | MTP Fiber Number |
|-----------------|--------------|----------------|------------------|
| Fiber 1 | Blue | B | Fiber 1 |
| Fiber 2 | Orange | A | Fiber 2 |
| Fiber 3 | Green | B | Fiber 3 |
| Fiber 4 | Brown | A | Fiber 4 |
| Fiber 5 | Gray | B | Fiber 5 |
| Fiber 6 | White | A | Fiber 6 |
| Fiber 7 | Red | B | Fiber 7 |
| Fiber 8 | Black | A | Fiber 8 |
| Fiber 9 | Yellow | B | Fiber 9 |
| Fiber 10 | Purple | A | Fiber 10 |
| Fiber 11 | Pink | B | Fiber 11 |
| Fiber 12 | Aqua | A | Fiber 12 |

GT-CAS-MPAM-LC12-AFSM

Fiber Cassette MTP-APC Male to 12xLC/UPC Method-A Flipped Singlemode

Specifications:

Panel Material: SPCC, 1.5mm thickness

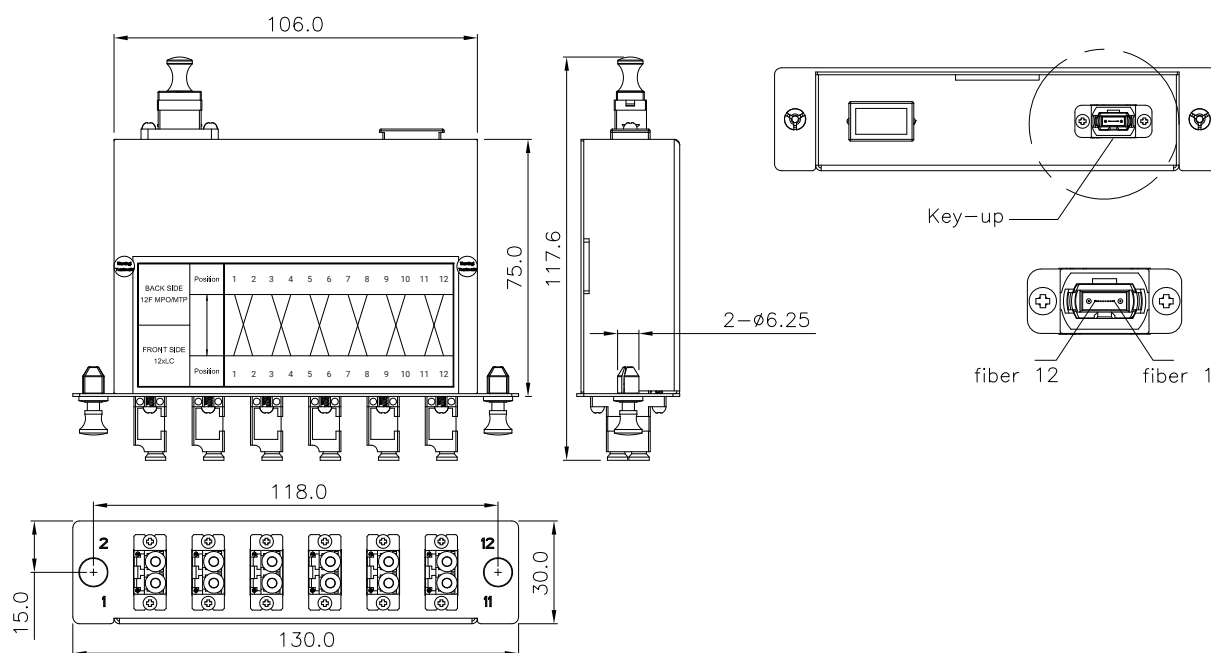
Dimensions: 1.18" x 5.12" x 2.95" (30.0 x 130 x 75mm)

Weight: 0.23kg

Finish: Painted, Black (RAL9005)

Accessory: 2 pcs, Snap Rivet, Male Nylon/Female PC

Adaptor: 6x LC Duplex



Method A Flipped

| LC | Pair Flip | MTP |
|----|-----------|-----|
| 1 | ↗ ↘ | 1 |
| 2 | ↖ ↙ | 2 |
| 3 | ↗ ↘ | 3 |
| 4 | ↖ ↙ | 4 |
| 5 | ↗ ↘ | 5 |
| 6 | ↖ ↙ | 6 |
| 7 | ↗ ↘ | 7 |
| 8 | ↖ ↙ | 8 |
| 9 | ↗ ↘ | 9 |
| 10 | ↖ ↙ | 10 |
| 11 | ↗ ↘ | 11 |
| 12 | ↖ ↙ | 12 |

| LC Fiber Number | Jacket Color | Fiber Position | MTP Fiber Number |
|--------------------|-----------------|-------------------|---------------------|
| Fiber 1 | Orange | B | Fiber 2 |
| Fiber 2 | Blue | A | Fiber 1 |
| Fiber 3 | Brown | B | Fiber 4 |
| Fiber 4 | Green | A | Fiber 3 |
| Fiber 5 | White | B | Fiber 6 |
| Fiber 6 | Gray | A | Fiber 5 |
| Fiber 7 | Black | B | Fiber 8 |
| Fiber 8 | Red | A | Fiber 7 |
| Fiber 9 | Purple | B | Fiber 10 |
| Fiber 10 | Yellow | A | Fiber 9 |
| Fiber 11 | Aqua | B | Fiber 12 |
| Fiber 12 | Pink | A | Fiber 11 |

GT-CAS-MPAM-LC12-BUSM

Fiber Cassette MTP-APC Male to 12xLC/UPC Method-B Universal Singlemode

Specifications:

Panel Material: SPCC, 1.5mm thickness

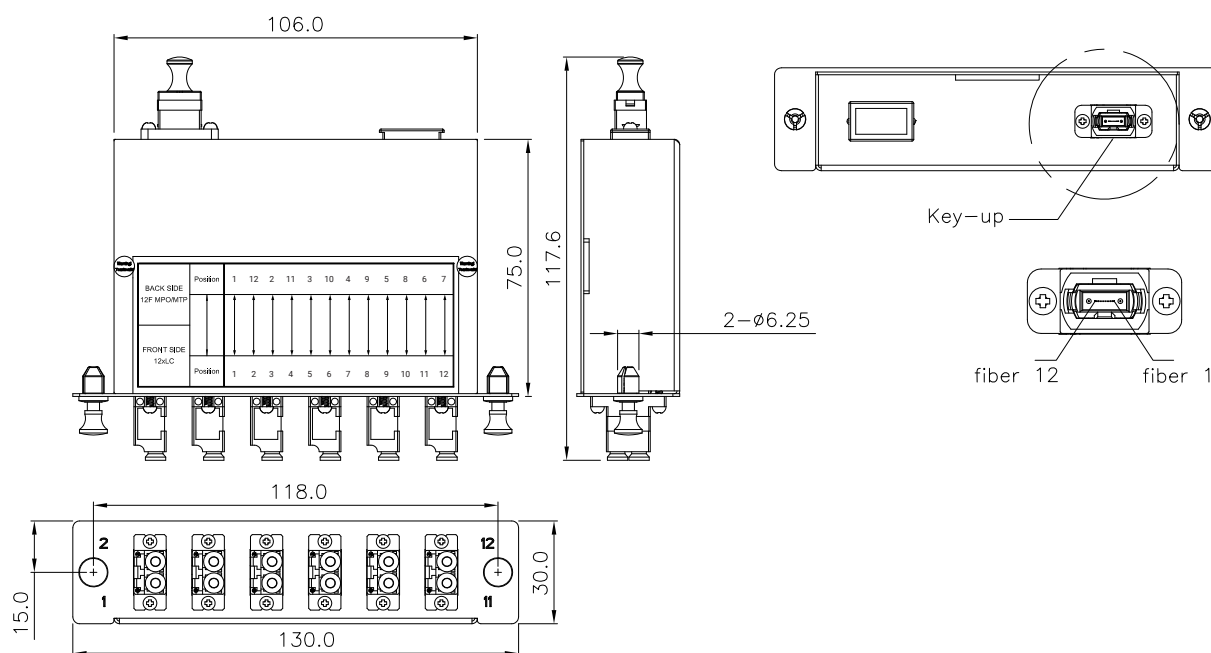
Dimensions: 1.18" x 5.12" x 2.95" (30.0 x 130 x 75mm)

Weight: 0.23kg

Finish: Painted, Black (RAL9005)

Accessory: 2 pcs, Snap Rivet, Male Nylon/Female PC

Adaptor: 6x LC Duplex



Method B Universal

| LC | B Universal | MTP |
|----|-------------|-----|
| 1 | ←→ | 1 |
| 2 | ←→ | 12 |
| 3 | ←→ | 2 |
| 4 | ←→ | 11 |
| 5 | ←→ | 3 |
| 6 | ←→ | 10 |
| 7 | ←→ | 4 |
| 8 | ←→ | 9 |
| 9 | ←→ | 5 |
| 10 | ←→ | 8 |
| 11 | ←→ | 6 |
| 12 | ←→ | 7 |

| LC Fiber Number | Jacket Color | Fiber Position | MTP Fiber Number |
|--------------------|-----------------|-------------------|---------------------|
| Fiber 1 | Blue | B | Fiber 1 |
| Fiber 2 | Aqua | A | Fiber 12 |
| Fiber 3 | Orange | B | Fiber 2 |
| Fiber 4 | Green | A | Fiber 11 |
| Fiber 5 | Violet | B | Fiber 3 |
| Fiber 6 | Brown | A | Fiber 10 |
| Fiber 7 | Red | B | Fiber 4 |
| Fiber 8 | Yellow | A | Fiber 9 |
| Fiber 9 | Gray | B | Fiber 5 |
| Fiber 10 | Black | A | Fiber 8 |
| Fiber 11 | White | B | Fiber 6 |
| Fiber 12 | Red | A | Fiber 7 |

GT-CAS-MPM2-LC24

Fiber Cassette 2xMTP Male to 24xLC/UPC



The GigaTech Products **GT-CAS-MPM2-LC24** fiber cassette adapter provides a versatile solution for high density fiber termination. Compact and durable, these fiber cassette modules feature MTP® to factory-terminated fiber connections that offer plug-in simplicity. Ruggedly engineered with breakout assemblies inside an aluminum housing, our fiber cassette modules provide no-splice, high-density fiber termination in patch panels and enclosures for easier deployment and expansion. All fiber cassette adaptors are covered by our standard Lifetime Warranty.

Features

- 12x LC Duplex Connectors
- Tool-less installation & removal
- Compatible with all LGX panels & enclosures
- Standard TIA/EIA-568.3-D color code

Compliance

- RoHS Compliant
- ISO9001
- TIA/EIA-568-C.3

Applications:

- FHD Rackmount Fiber Management

Specifications

| | | | |
|-----------------------|-------------------|------------------------|------------------------|
| Adapter Type | LC Duplex | Fiber Mode | OM4 50/125µm Multimode |
| LC Ports | 12 | MTP Ports | 2x 12-Pin |
| Plate Material | SPCC Steel | Sleeve Material | Zirconia Ceramic |
| Dimensions | 30.0 x 130 x 75mm | Application | FHD Enclosures |

Polarity Options

| | |
|------------------------------|---|
| GT-CAS-MPM2-LC24-AMM | Fiber Cassette MTP Male to 24xLC/UPC Method-A Multimode |
| GT-CAS-MPM2-LC24-AFMM | Fiber Cassette MTP Male to 24xLC/UPC Method-A Flipped Multimode |
| GT-CAS-MPM2-LC24-BUMM | Fiber Cassette MTP Male to 24xLC/UPC Method-B Universal Multimode |

GT-CAS-MPM2-LC12-AMM

Fiber Cassette 2xMTP Male to 24xLC/UPC Method-A Multimode

Specifications:

Panel Material: SPCC, 1.5mm thickness

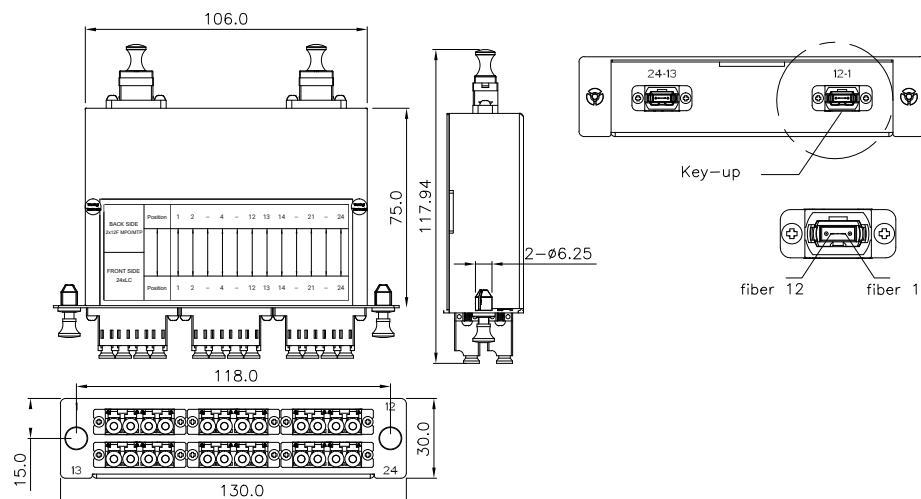
Dimensions: 1.18" x 5.12" x 2.95" (30.0 x 130 x 75mm)

Weight: 0.23kg

Finish: Painted, Black (RAL9005)

Accessory: 2 pcs, Snap Rivet, Male Nylon/Female PC

Adaptor: 12x LC Duplex



Method A

| LC | Straight | MTP |
|----|----------|-----|
| 1 | → | 1 |
| 2 | → | 2 |
| 3 | → | 3 |
| 4 | → | 4 |
| 5 | → | 5 |
| 6 | → | 6 |
| 7 | → | 7 |
| 8 | → | 8 |
| 9 | → | 9 |
| 10 | → | 10 |
| 11 | → | 11 |
| 12 | → | 12 |

| LC | Straight | MTP |
|----|----------|-----|
| 13 | → | 13 |
| 14 | → | 14 |
| 15 | → | 15 |
| 16 | → | 16 |
| 17 | → | 17 |
| 18 | → | 18 |
| 19 | → | 19 |
| 20 | → | 20 |
| 21 | → | 21 |
| 22 | → | 22 |
| 23 | → | 23 |
| 24 | → | 24 |

| LC Fiber Number | Jacket Color | Fiber Position | MTP Fiber Number |
|-----------------|--------------|----------------|------------------|
| Fiber 1 | Blue | B | Fiber 1 |
| Fiber 2 | Orange | A | Fiber 2 |
| Fiber 3 | Green | B | Fiber 3 |
| Fiber 4 | Brown | A | Fiber 4 |
| Fiber 5 | Grey | B | Fiber 5 |
| Fiber 6 | White | A | Fiber 6 |
| Fiber 7 | Red | B | Fiber 7 |
| Fiber 8 | Black | A | Fiber 8 |
| Fiber 9 | Yellow | B | Fiber 9 |
| Fiber 10 | Violet | A | Fiber 10 |
| Fiber 11 | Pink | B | Fiber 11 |
| Fiber 12 | Aqua | A | Fiber 12 |

| LC Fiber Number | Jacket Color | Fiber Position | MTP Fiber Number |
|-----------------|--------------|----------------|------------------|
| Fiber 13 | Blue | B | Fiber 13 |
| Fiber 14 | Orange | A | Fiber 14 |
| Fiber 15 | Green | B | Fiber 15 |
| Fiber 16 | Brown | A | Fiber 16 |
| Fiber 17 | Grey | B | Fiber 17 |
| Fiber 18 | White | A | Fiber 18 |
| Fiber 19 | Red | B | Fiber 19 |
| Fiber 20 | Black | A | Fiber 20 |
| Fiber 21 | Yellow | B | Fiber 21 |
| Fiber 22 | Violet | A | Fiber 22 |
| Fiber 23 | Pink | B | Fiber 23 |
| Fiber 24 | Aqua | A | Fiber 24 |

GT-CAS-MPM2-LC12-AFMM

Fiber Cassette 2xMTP Male to 24xLC/UPC Method-A Flipped Multimode

Specifications:

Panel Material: SPCC, 1.5mm thickness

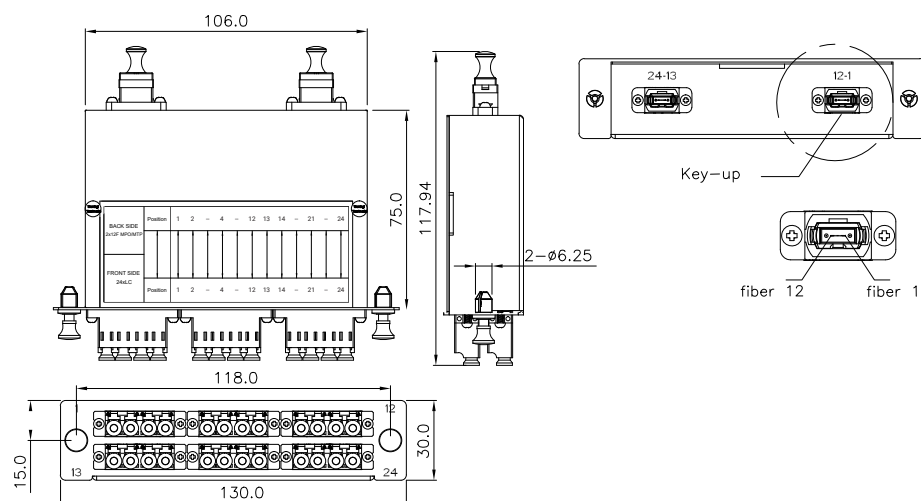
Dimensions: 1.18" x 5.12" x 2.95" (30.0 x 130 x 75mm)

Weight: 0.23kg

Finish: Painted, Black (RAL9005)

Accessory: 2 pcs, Snap Rivet, Male Nylon/Female PC

Adaptor: 12x LC Duplex



Method A Flipped

| LC | Pair Flip | MTP |
|----|-----------|-----|
| 1 | ↗ ↘ | 1 |
| 2 | ↖ ↙ | 2 |
| 3 | ↗ ↘ | 3 |
| 4 | ↖ ↙ | 4 |
| 5 | ↗ ↘ | 5 |
| 6 | ↖ ↙ | 6 |
| 7 | ↗ ↘ | 7 |
| 8 | ↖ ↙ | 8 |
| 9 | ↗ ↘ | 9 |
| 10 | ↖ ↙ | 10 |
| 11 | ↗ ↘ | 11 |
| 12 | ↖ ↙ | 12 |

| LC | Pair Flip | MTP |
|----|-----------|-----|
| 13 | ↗ ↘ | 13 |
| 14 | ↖ ↙ | 14 |
| 15 | ↗ ↘ | 15 |
| 16 | ↖ ↙ | 16 |
| 17 | ↗ ↘ | 17 |
| 18 | ↖ ↙ | 18 |
| 19 | ↗ ↘ | 19 |
| 20 | ↖ ↙ | 20 |
| 21 | ↗ ↘ | 21 |
| 22 | ↖ ↙ | 22 |
| 23 | ↗ ↘ | 23 |
| 24 | ↖ ↙ | 24 |

| LC Fiber Number | Jacket Color | Fiber Position | MTP Fiber Number |
|-----------------|--------------|----------------|------------------|
| Fiber 1 | Orange | B | Fiber 2 |
| Fiber 2 | Blue | A | Fiber 1 |
| Fiber 3 | Brown | B | Fiber 4 |
| Fiber 4 | Green | A | Fiber 3 |
| Fiber 5 | White | B | Fiber 6 |
| Fiber 6 | Gray | A | Fiber 5 |
| Fiber 7 | Black | B | Fiber 8 |
| Fiber 8 | Red | A | Fiber 7 |
| Fiber 9 | Purple | B | Fiber 10 |
| Fiber 10 | Yellow | A | Fiber 9 |
| Fiber 11 | Aqua | B | Fiber 12 |
| Fiber 12 | Pink | A | Fiber 11 |

| LC Fiber Number | Jacket Color | Fiber Position | MTP Fiber Number |
|-----------------|--------------|----------------|------------------|
| Fiber 13 | Orange | B | Fiber 14 |
| Fiber 14 | Blue | A | Fiber 13 |
| Fiber 15 | Brown | B | Fiber 16 |
| Fiber 16 | Green | A | Fiber 15 |
| Fiber 17 | White | B | Fiber 18 |
| Fiber 18 | Gray | A | Fiber 17 |
| Fiber 19 | Black | B | Fiber 20 |
| Fiber 20 | Red | A | Fiber 19 |
| Fiber 21 | Purple | B | Fiber 22 |
| Fiber 22 | Yellow | A | Fiber 21 |
| Fiber 23 | Aqua | B | Fiber 24 |
| Fiber 24 | Pink | A | Fiber 23 |

GT-CAS-MPM2-LC12-BUMM

Fiber Cassette 2xMTP Male to 24xLC/UPC Method-B Universal Multimode

Specifications:

Panel Material: SPCC, 1.5mm thickness

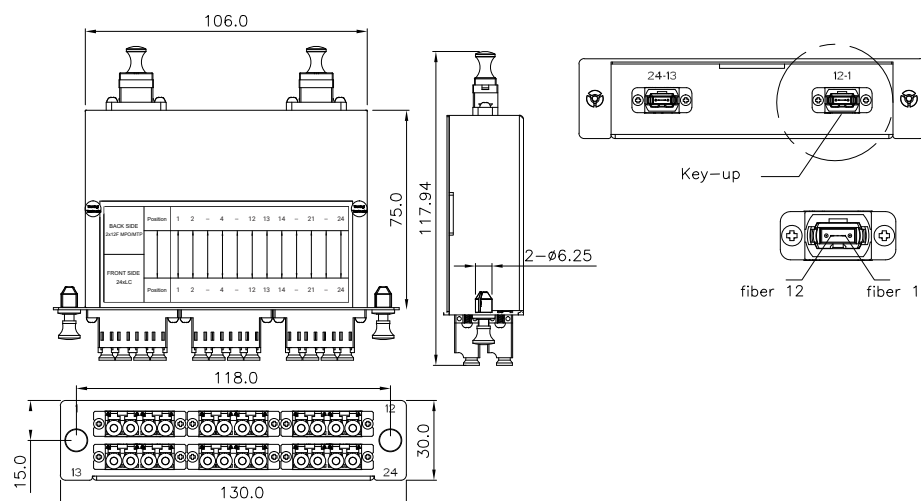
Dimensions: 1.18" x 5.12" x 2.95" (30.0 x 130 x 75mm)

Weight: 0.23kg

Finish: Painted, Black (RAL9005)

Accessory: 2 pcs, Snap Rivet, Male Nylon/Female PC

Adaptor: 12x LC Duplex



Method B Universal

| LC | B Universal | MTP |
|----|-------------|-----|
| 1 | | 1 |
| 2 | | 12 |
| 3 | | 2 |
| 4 | | 11 |
| 5 | | 3 |
| 6 | | 10 |
| 7 | | 4 |
| 8 | | 9 |
| 9 | | 5 |
| 10 | | 8 |
| 11 | | 6 |
| 12 | | 7 |

| LC | B Universal | MTP |
|----|-------------|-----|
| 13 | | 13 |
| 14 | | 24 |
| 15 | | 14 |
| 16 | | 23 |
| 17 | | 15 |
| 18 | | 22 |
| 19 | | 16 |
| 20 | | 21 |
| 21 | | 17 |
| 22 | | 20 |
| 23 | | 18 |
| 24 | | 19 |

| LC Fiber Number | Jacket Color | Fiber Position | MTP Fiber Number |
|-----------------|--------------|----------------|------------------|
| Fiber 1 | Blue | B | Fiber 1 |
| Fiber 2 | Aqua | A | Fiber 12 |
| Fiber 3 | Orange | B | Fiber 2 |
| Fiber 4 | Green | A | Fiber 11 |
| Fiber 5 | Violet | B | Fiber 3 |
| Fiber 6 | Brown | A | Fiber 10 |
| Fiber 7 | Red | B | Fiber 4 |
| Fiber 8 | Yellow | A | Fiber 9 |
| Fiber 9 | Gray | B | Fiber 5 |
| Fiber 10 | Black | A | Fiber 8 |
| Fiber 11 | White | B | Fiber 6 |
| Fiber 12 | Red | A | Fiber 7 |

| LC Fiber Number | Jacket Color | Fiber Position | MTP Fiber Number |
|-----------------|--------------|----------------|------------------|
| Fiber 1 | Blue | B | Fiber 13 |
| Fiber 2 | Aqua | A | Fiber 24 |
| Fiber 3 | Orange | B | Fiber 14 |
| Fiber 4 | Green | A | Fiber 23 |
| Fiber 5 | Violet | B | Fiber 15 |
| Fiber 6 | Brown | A | Fiber 22 |
| Fiber 7 | Red | B | Fiber 16 |
| Fiber 8 | Yellow | A | Fiber 21 |
| Fiber 9 | Gray | B | Fiber 17 |
| Fiber 10 | Black | A | Fiber 20 |
| Fiber 11 | White | B | Fiber 18 |
| Fiber 12 | Red | A | Fiber 19 |

GT-CAS-MPAM2-LC24

Fiber Cassette 2xMTP-APC Male to 24xLC/UPC Singlemode



The GigaTech Products **GT-CAS-MPAM2-LC24** fiber cassette adapter provides a versatile solution for high density fiber termination. Compact and durable, these fiber cassette modules feature MTP® to factory-terminated fiber connections that offer plug-in simplicity. Ruggedly engineered with breakout assemblies inside an aluminum housing, our fiber cassette modules provide no-splice, high-density fiber termination in patch panels and enclosures for easier deployment and expansion. All fiber cassette adaptors are covered by our standard Lifetime Warranty.

Features

- 12x LC Duplex Connectors
- Tool-less installation & removal
- Compatible with all LGX panels & enclosures
- Standard TIA/EIA-568.3-D color code

Compliance

- RoHS Compliant
- ISO9001
- TIA/EIA-568-C.3

Applications:

- FHD Rackmount Fiber Management

Specifications

| | | | |
|-----------------------|-------------------|------------------------|------------------|
| Adapter Type | LC Duplex | Fiber Mode | OS2 9/125µm |
| LC Ports | 12 | MTP Ports | 2x 12-Pin |
| Plate Material | SPCC Steel | Sleeve Material | Zirconia Ceramic |
| Dimensions | 30.0 x 130 x 75mm | Application | FHD Enclosures |

Polarity Options

| | |
|-------------------------------|--|
| GT-CAS-MPAM2-LC24-ASM | Fiber Cassette 2xMTP-APC Male to 24xLC/UPC Method-A Singlemode |
| GT-CAS-MPAM2-LC24-AFSM | Fiber Cassette 2xMTP-APC Male to 24xLC/UPC Method-A Flipped Singlemode |
| GT-CAS-MPAM2-LC24-BUSM | Fiber Cassette 2xMTP-APC Male to 24xLC/UPC Method-B Universal Singlemode |

GT-CAS-MPAM2-LC12-ASM

Fiber Cassette 2xMTP-APC Male to 24xLC/UPC Method-A Singlemode

Specifications:

Panel Material: SPCC, 1.5mm thickness

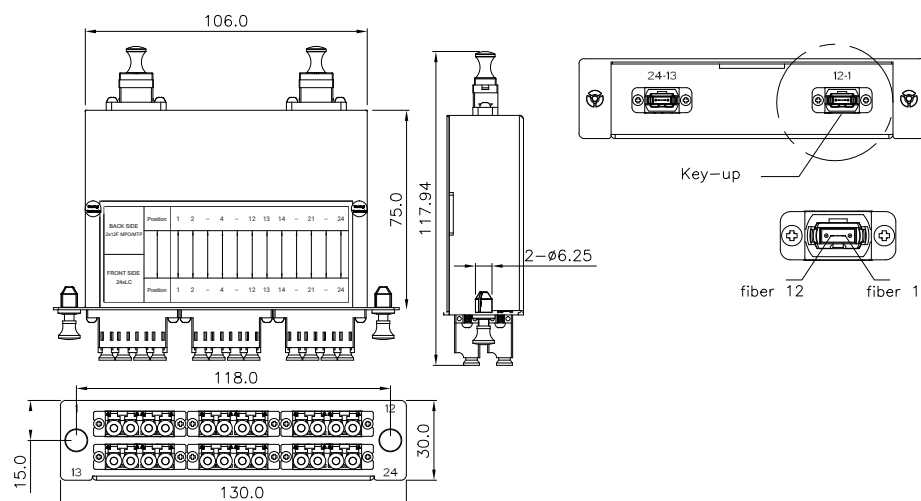
Dimensions: 1.18" x 5.12" x 2.95" (30.0 x 130 x 75mm)

Weight: 0.23kg

Finish: Painted, Black (RAL9005)

Accessory: 2 pcs, Snap Rivet, Male Nylon/Female PC

Adaptor: 12x LC Duplex



Method A

| LC | Straight | MTP |
|----|----------|-----|
| 1 | → | 1 |
| 2 | → | 2 |
| 3 | → | 3 |
| 4 | → | 4 |
| 5 | → | 5 |
| 6 | → | 6 |
| 7 | → | 7 |
| 8 | → | 8 |
| 9 | → | 9 |
| 10 | → | 10 |
| 11 | → | 11 |
| 12 | → | 12 |

| LC | Straight | MTP |
|----|----------|-----|
| 13 | → | 13 |
| 14 | → | 14 |
| 15 | → | 15 |
| 16 | → | 16 |
| 17 | → | 17 |
| 18 | → | 18 |
| 19 | → | 19 |
| 20 | → | 20 |
| 21 | → | 21 |
| 22 | → | 22 |
| 23 | → | 23 |
| 24 | → | 24 |

| LC Fiber Number | Jacket Color | Fiber Position | MTP Fiber Number |
|-----------------|--------------|----------------|------------------|
| Fiber 1 | Blue | B | Fiber 1 |
| Fiber 2 | Orange | A | Fiber 2 |
| Fiber 3 | Green | B | Fiber 3 |
| Fiber 4 | Brown | A | Fiber 4 |
| Fiber 5 | Grey | B | Fiber 5 |
| Fiber 6 | White | A | Fiber 6 |
| Fiber 7 | Red | B | Fiber 7 |
| Fiber 8 | Black | A | Fiber 8 |
| Fiber 9 | Yellow | B | Fiber 9 |
| Fiber 10 | Violet | A | Fiber 10 |
| Fiber 11 | Pink | B | Fiber 11 |
| Fiber 12 | Aqua | A | Fiber 12 |

| LC Fiber Number | Jacket Color | Fiber Position | MTP Fiber Number |
|-----------------|--------------|----------------|------------------|
| Fiber 13 | Blue | B | Fiber 13 |
| Fiber 14 | Orange | A | Fiber 14 |
| Fiber 15 | Green | B | Fiber 15 |
| Fiber 16 | Brown | A | Fiber 16 |
| Fiber 17 | Grey | B | Fiber 17 |
| Fiber 18 | White | A | Fiber 18 |
| Fiber 19 | Red | B | Fiber 19 |
| Fiber 20 | Black | A | Fiber 20 |
| Fiber 21 | Yellow | B | Fiber 21 |
| Fiber 22 | Violet | A | Fiber 22 |
| Fiber 23 | Pink | B | Fiber 23 |
| Fiber 24 | Aqua | A | Fiber 24 |

GT-CAS-MPAM2-LC12-AFSM

Fiber Cassette 2xMTP-APC Male to 24xLC/UPC Method-A Flipped Singlemode

Specifications:

Panel Material: SPCC, 1.5mm thickness

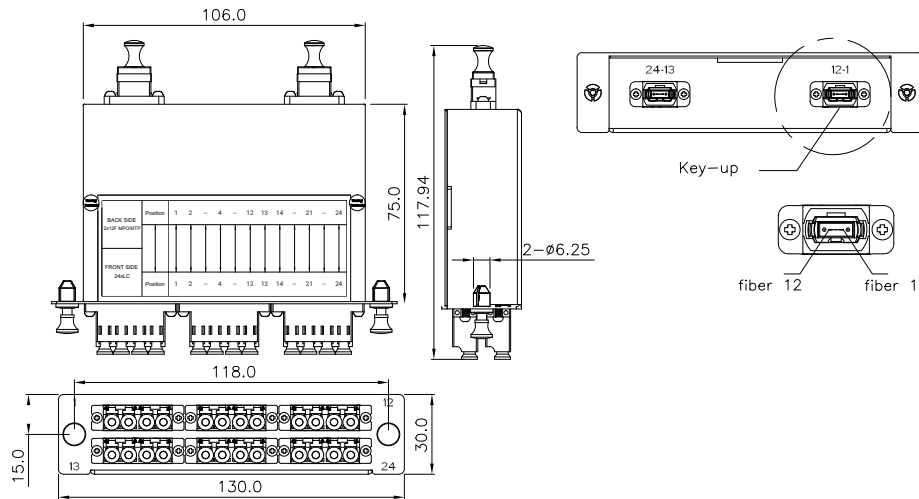
Dimensions: 1.18" x 5.12" x 2.95" (30.0 x 130 x 75mm)

Weight: 0.23kg

Finish: Painted, Black (RAL9005)

Accessory: 2 pcs, Snap Rivet, Male Nylon/Female PC

Adaptor: 12x LC Duplex



Method A Flipped

| LC | Pair Flip | MTP |
|----|-----------|-----|
| 1 | ↗ ↘ | 1 |
| 2 | ↗ ↘ | 2 |
| 3 | ↗ ↘ | 3 |
| 4 | ↗ ↘ | 4 |
| 5 | ↗ ↘ | 5 |
| 6 | ↗ ↘ | 6 |
| 7 | ↗ ↘ | 7 |
| 8 | ↗ ↘ | 8 |
| 9 | ↗ ↘ | 9 |
| 10 | ↗ ↘ | 10 |
| 11 | ↗ ↘ | 11 |
| 12 | ↗ ↘ | 12 |

| LC | Pair Flip | MTP |
|----|-----------|-----|
| 13 | ↗ ↘ | 13 |
| 14 | ↗ ↘ | 14 |
| 15 | ↗ ↘ | 15 |
| 16 | ↗ ↘ | 16 |
| 17 | ↗ ↘ | 17 |
| 18 | ↗ ↘ | 18 |
| 19 | ↗ ↘ | 19 |
| 20 | ↗ ↘ | 20 |
| 21 | ↗ ↘ | 21 |
| 22 | ↗ ↘ | 22 |
| 23 | ↗ ↘ | 23 |
| 24 | ↗ ↘ | 24 |

| LC Fiber Number | Jacket Color | Fiber Position | MTP Fiber Number |
|-----------------|--------------|----------------|------------------|
| Fiber 1 | Orange | B | Fiber 2 |
| Fiber 2 | Blue | A | Fiber 1 |
| Fiber 3 | Brown | B | Fiber 4 |
| Fiber 4 | Green | A | Fiber 3 |
| Fiber 5 | White | B | Fiber 6 |
| Fiber 6 | Gray | A | Fiber 5 |
| Fiber 7 | Black | B | Fiber 8 |
| Fiber 8 | Red | A | Fiber 7 |
| Fiber 9 | Purple | B | Fiber 10 |
| Fiber 10 | Yellow | A | Fiber 9 |
| Fiber 11 | Aqua | B | Fiber 12 |
| Fiber 12 | Pink | A | Fiber 11 |

| LC Fiber Number | Jacket Color | Fiber Position | MTP Fiber Number |
|-----------------|--------------|----------------|------------------|
| Fiber 13 | Orange | B | Fiber 14 |
| Fiber 14 | Blue | A | Fiber 13 |
| Fiber 15 | Brown | B | Fiber 16 |
| Fiber 16 | Green | A | Fiber 15 |
| Fiber 17 | White | B | Fiber 18 |
| Fiber 18 | Gray | A | Fiber 17 |
| Fiber 19 | Black | B | Fiber 20 |
| Fiber 20 | Red | A | Fiber 19 |
| Fiber 21 | Purple | B | Fiber 22 |
| Fiber 22 | Yellow | A | Fiber 21 |
| Fiber 23 | Aqua | B | Fiber 24 |
| Fiber 24 | Pink | A | Fiber 23 |

GT-CAS-MPAM2-LC12-BUSM

Fiber Cassette 2xMTP-APC Male to 24xLC/UPC Method-B Universal Singlemode

Specifications:

Panel Material: SPCC, 1.5mm thickness

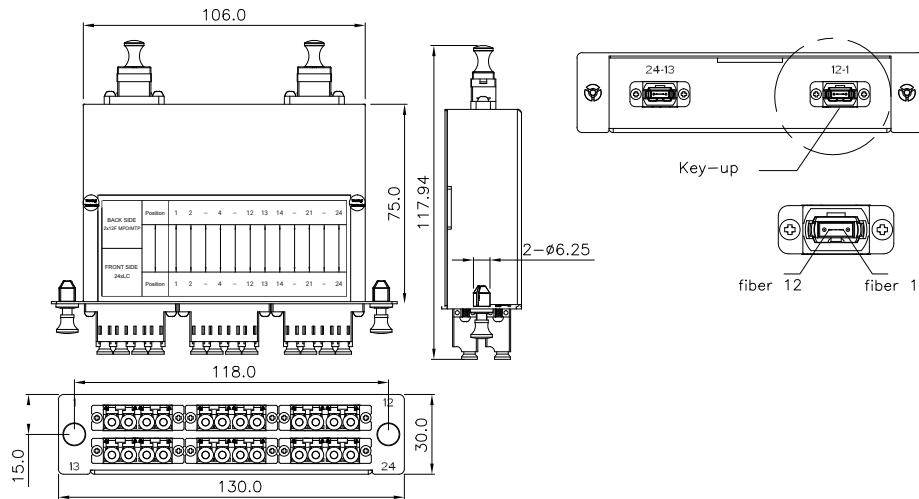
Dimensions: 1.18" x 5.12" x 2.95" (30.0 x 130 x 75mm)

Weight: 0.23kg

Finish: Painted, Black (RAL9005)

Accessory: 2 pcs, Snap Rivet, Male Nylon/Female PC

Adaptor: 12x LC Duplex



Method B Universal

| LC | B Universal | MTP |
|----|-------------|-----|
| 1 | → | 1 |
| 2 | → | 12 |
| 3 | → | 2 |
| 4 | → | 11 |
| 5 | → | 3 |
| 6 | → | 10 |
| 7 | → | 4 |
| 8 | → | 9 |
| 9 | → | 5 |
| 10 | → | 8 |
| 11 | → | 6 |
| 12 | → | 7 |

| LC | B Universal | MTP |
|----|-------------|-----|
| 13 | → | 13 |
| 14 | → | 24 |
| 15 | → | 14 |
| 16 | → | 23 |
| 17 | → | 15 |
| 18 | → | 22 |
| 19 | → | 16 |
| 20 | → | 21 |
| 21 | → | 17 |
| 22 | → | 20 |
| 23 | → | 18 |
| 24 | → | 19 |

| LC Fiber Number | Jacket Color | Fiber Position | MTP Fiber Number |
|-----------------|--------------|----------------|------------------|
| Fiber 1 | Blue | B | Fiber 1 |
| Fiber 2 | Aqua | A | Fiber 12 |
| Fiber 3 | Orange | B | Fiber 2 |
| Fiber 4 | Green | A | Fiber 11 |
| Fiber 5 | Violet | B | Fiber 3 |
| Fiber 6 | Brown | A | Fiber 10 |
| Fiber 7 | Red | B | Fiber 4 |
| Fiber 8 | Yellow | A | Fiber 9 |
| Fiber 9 | Gray | B | Fiber 5 |
| Fiber 10 | Black | A | Fiber 8 |
| Fiber 11 | White | B | Fiber 6 |
| Fiber 12 | Red | A | Fiber 7 |

| LC Fiber Number | Jacket Color | Fiber Position | MTP Fiber Number |
|-----------------|--------------|----------------|------------------|
| Fiber 1 | Blue | B | Fiber 13 |
| Fiber 2 | Aqua | A | Fiber 24 |
| Fiber 3 | Orange | B | Fiber 14 |
| Fiber 4 | Green | A | Fiber 23 |
| Fiber 5 | Violet | B | Fiber 15 |
| Fiber 6 | Brown | A | Fiber 22 |
| Fiber 7 | Red | B | Fiber 16 |
| Fiber 8 | Yellow | A | Fiber 21 |
| Fiber 9 | Gray | B | Fiber 17 |
| Fiber 10 | Black | A | Fiber 20 |
| Fiber 11 | White | B | Fiber 18 |
| Fiber 12 | Red | A | Fiber 19 |

GT-CAS-MP24M-LC24

Fiber Cassette MTP24 Male to 24xLC/UPC



The GigaTech Products **GT-CAS-MPM2-LC24** fiber cassette adapter provides a versatile solution for high density fiber termination. Compact and durable, these fiber cassette modules feature MTP® to factory-terminated fiber connections that offer plug-in simplicity. Ruggedly engineered with breakout assemblies inside an aluminum housing, our fiber cassette modules provide no-splice, high-density fiber termination in patch panels and enclosures for easier deployment and expansion. All fiber cassette adaptors are covered by our standard Lifetime Warranty.

Features

- 12x LC Duplex Connectors
- Tool-less installation & removal
- Compatible with all LGX panels & enclosures
- Standard TIA/EIA-568.3-D color code

Compliance

- RoHS Compliant
- ISO9001
- TIA/EIA-568-C.3

Applications:

- FHD Rackmount Fiber Management

Specifications

| | | | |
|-----------------------|-------------------|------------------------|------------------------|
| Adapter Type | LC Duplex | Fiber Mode | OM4 50/125µm Multimode |
| LC Ports | 12 | MTP Ports | 1x 24-Pin |
| Plate Material | SPCC Steel | Sleeve Material | Zirconia Ceramic |
| Dimensions | 30.0 x 130 x 75mm | Application | FHD Enclosures |

Polarity Options

| | |
|-------------------------------|---|
| GT-CAS-MP24M-LC24-AMM | Fiber Cassette MTP24 Male to 24xLC/UPC Method-A Multimode |
| GT-CAS-MP24M-LC24-AFMM | Fiber Cassette MTP24 Male to 24xLC/UPC Method-A Flipped Multimode |

GT-CAS-MP24M-LC24-AMM

Fiber Cassette MTP24 Male to 24xLC/UPC Method-A Multimode

Specifications:

Panel Material: SPCC, 1.5mm thickness

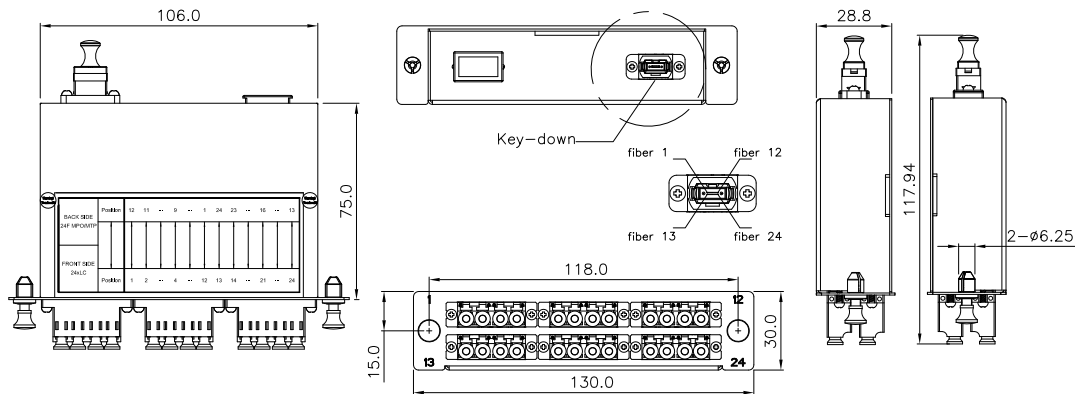
Dimensions: 1.18" x 5.12" x 2.95" (30.0 x 130 x 75mm)

Weight: 0.23kg

Finish: Painted, Black (RAL9005)

Accessory: 2 pcs, Snap Rivet, Male Nylon/Female PC

Adaptor: 12x LC Duplex



Method A

| LC | Straight | MTP |
|----|----------|-----|
| 1 | → | 12 |
| 2 | → | 11 |
| 3 | → | 10 |
| 4 | → | 9 |
| 5 | → | 8 |
| 6 | → | 7 |
| 7 | → | 6 |
| 8 | → | 5 |
| 9 | → | 4 |
| 10 | → | 3 |
| 11 | → | 2 |
| 12 | → | 1 |

| LC Fiber Number | Jacket Color | Fiber Position | MTP Fiber Number |
|-----------------|--------------|----------------|------------------|
| Fiber 1 | Aqua | B | Fiber 12 |
| Fiber 2 | Pink | A | Fiber 11 |
| Fiber 3 | Violet | B | Fiber 10 |
| Fiber 4 | Yellow | A | Fiber 9 |
| Fiber 5 | Black | B | Fiber 8 |
| Fiber 6 | Red | A | Fiber 7 |
| Fiber 7 | White | B | Fiber 6 |
| Fiber 8 | Gray | A | Fiber 5 |
| Fiber 9 | Brown | B | Fiber 4 |
| Fiber 10 | Green | A | Fiber 3 |
| Fiber 11 | Orange | B | Fiber 2 |
| Fiber 12 | Blue | A | Fiber 1 |

| LC | Straight | MTP |
|----|----------|-----|
| 13 | → | 24 |
| 14 | → | 23 |
| 15 | → | 22 |
| 16 | → | 21 |
| 17 | → | 20 |
| 18 | → | 19 |
| 19 | → | 18 |
| 20 | → | 17 |
| 21 | → | 16 |
| 22 | → | 15 |
| 23 | → | 14 |
| 24 | → | 13 |

| LC Fiber Number | Jacket Color | Fiber Position | MTP Fiber Number |
|-----------------|--------------|----------------|------------------|
| Fiber 13 | Aqua | B | Fiber 24 |
| Fiber 14 | Pink | A | Fiber 23 |
| Fiber 15 | Violet | B | Fiber 22 |
| Fiber 16 | Yellow | A | Fiber 21 |
| Fiber 17 | Black | B | Fiber 20 |
| Fiber 18 | Red | A | Fiber 19 |
| Fiber 19 | White | B | Fiber 18 |
| Fiber 20 | Gray | A | Fiber 17 |
| Fiber 21 | Brown | B | Fiber 16 |
| Fiber 22 | Green | A | Fiber 15 |
| Fiber 23 | Orange | B | Fiber 14 |
| Fiber 24 | Blue | A | Fiber 13 |

GT-CAS-MP24M-LC24-AFMM

Fiber Cassette MTP24 Male to 24xLC/UPC Method-A Flipped Multimode

Specifications:

Panel Material: SPCC, 1.5mm thickness

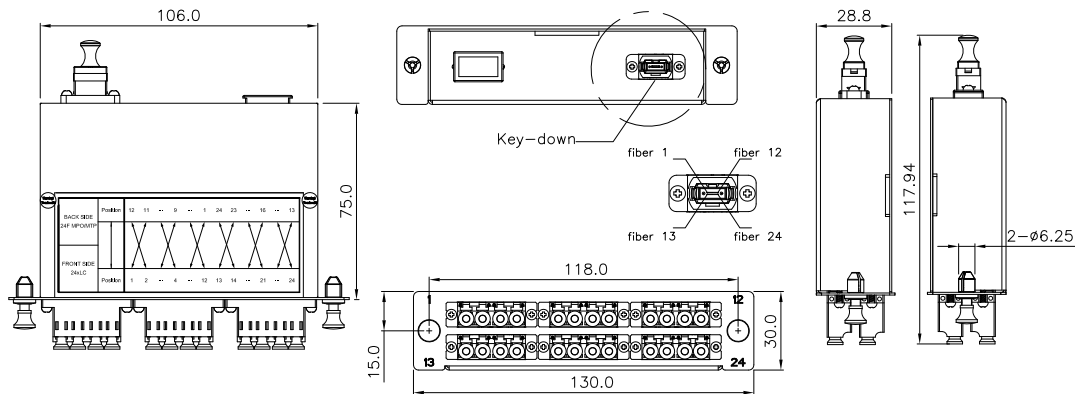
Dimensions: 1.18" x 5.12" x 2.95" (30.0 x 130 x 75mm)

Weight: 0.23kg

Finish: Painted, Black (RAL9005)

Accessory: 2 pcs, Snap Rivet, Male Nylon/Female PC

Adaptor: 12x LC Duplex



Method A Flipped

| LC | Pair Flip | MTP |
|----|-----------|-----|
| 1 | ↗ ↘ | 11 |
| 2 | ↖ ↙ | 12 |
| 3 | ↗ ↘ | 9 |
| 4 | ↖ ↙ | 10 |
| 5 | ↗ ↘ | 7 |
| 6 | ↖ ↙ | 8 |
| 7 | ↗ ↘ | 5 |
| 8 | ↖ ↙ | 6 |
| 9 | ↗ ↘ | 3 |
| 10 | ↖ ↙ | 4 |
| 11 | ↗ ↘ | 1 |
| 12 | ↖ ↙ | 2 |

| LC | Pair Flip | MTP |
|----|-----------|-----|
| 13 | ↗ ↘ | 23 |
| 14 | ↖ ↙ | 24 |
| 15 | ↗ ↘ | 21 |
| 16 | ↖ ↙ | 22 |
| 17 | ↗ ↘ | 19 |
| 18 | ↖ ↙ | 20 |
| 19 | ↗ ↘ | 17 |
| 20 | ↖ ↙ | 18 |
| 21 | ↗ ↘ | 15 |
| 22 | ↖ ↙ | 16 |
| 23 | ↗ ↘ | 13 |
| 24 | ↖ ↙ | 14 |

| LC Fiber Number | Jacket Color | Fiber Position | MTP Fiber Number |
|-----------------|--------------|----------------|------------------|
| Fiber 1 | Pink | B | Fiber 11 |
| Fiber 2 | Aqua | A | Fiber 12 |
| Fiber 3 | Yellow | B | Fiber 9 |
| Fiber 4 | Violet | A | Fiber 10 |
| Fiber 5 | Red | B | Fiber 7 |
| Fiber 6 | Black | A | Fiber 8 |
| Fiber 7 | Gray | B | Fiber 5 |
| Fiber 8 | White | A | Fiber 6 |
| Fiber 9 | Green | B | Fiber 3 |
| Fiber 10 | Brown | A | Fiber 4 |
| Fiber 11 | Blue | B | Fiber 1 |
| Fiber 12 | Orange | A | Fiber 2 |

| LC Fiber Number | Jacket Color | Fiber Position | MTP Fiber Number |
|-----------------|--------------|----------------|------------------|
| Fiber 13 | Pink | B | Fiber 23 |
| Fiber 14 | Aqua | A | Fiber 24 |
| Fiber 15 | Yellow | B | Fiber 21 |
| Fiber 16 | Violet | A | Fiber 22 |
| Fiber 17 | Red | B | Fiber 19 |
| Fiber 18 | Black | A | Fiber 20 |
| Fiber 19 | Gray | B | Fiber 17 |
| Fiber 20 | White | A | Fiber 18 |
| Fiber 21 | Green | B | Fiber 15 |
| Fiber 22 | Brown | A | Fiber 16 |
| Fiber 23 | Blue | B | Fiber 13 |
| Fiber 24 | Orange | A | Fiber 14 |

GT-CAS-MP24AM-LC24

Fiber Cassette MTP24-APC Male to 24xLC/UPC Singlemode



The GigaTech Products **GT-CAS-MPAM2-LC24** fiber cassette adapter provides a versatile solution for high density fiber termination. Compact and durable, these fiber cassette modules feature MTP® to factory-terminated fiber connections that offer plug-in simplicity. Ruggedly engineered with breakout assemblies inside an aluminum housing, our fiber cassette modules provide no-splice, high-density fiber termination in patch panels and enclosures for easier deployment and expansion. All fiber cassette adaptors are covered by our standard Lifetime Warranty.

Features

- 12x LC Duplex Connectors
- Tool-less installation & removal
- Compatible with all LGX panels & enclosures
- Standard TIA/EIA-568.3-D color code

Compliance

- RoHS Compliant
- ISO9001
- TIA/EIA-568-C.3

Applications:

- FHD Rackmount Fiber Management

Specifications

| | | | |
|-----------------------|-------------------|------------------------|------------------|
| Adapter Type | LC Duplex | Fiber Mode | OS2 9/125µm |
| LC Ports | 12 | MTP Ports | 1x 24-Pin APC |
| Plate Material | SPCC Steel | Sleeve Material | Zirconia Ceramic |
| Dimensions | 30.0 x 130 x 75mm | Application | FHD Enclosures |

Polarity Options

| | |
|--------------------------------|--|
| GT-CAS-MP24AM-LC24-ASM | Fiber Cassette MTP24-APC Male to 24xLC/UPC Method-A Singlemode |
| GT-CAS-MP24AM-LC24-AFSM | Fiber Cassette MTP24-APC Male to 24xLC/UPC Method-A Flipped Singlemode |

GT-CAS-MP24AM-LC24-ASM

Fiber Cassette MTP24-APC Male to 24xLC/UPC Method-A Singlemode

Specifications:

Panel Material: SPCC, 1.5mm thickness

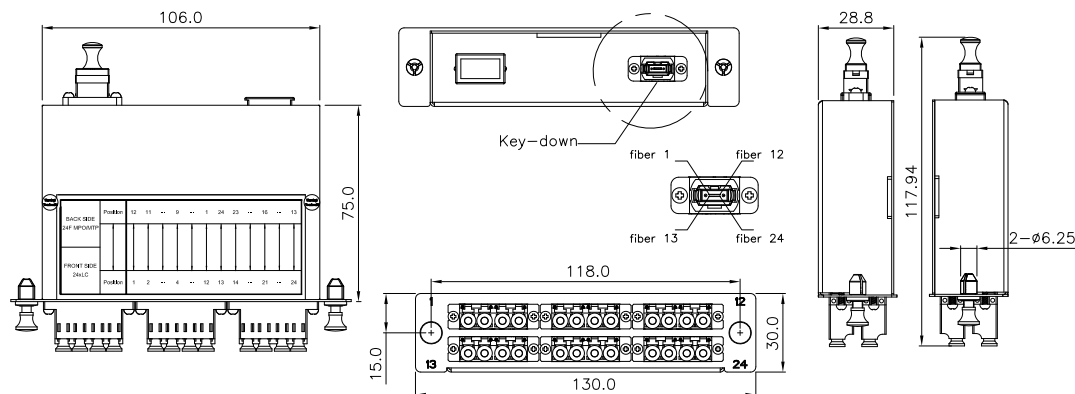
Dimensions: 1.18" x 5.12" x 2.95" (30.0 x 130 x 75mm)

Weight: 0.23kg

Finish: Painted, Black (RAL9005)

Accessory: 2 pcs, Snap Rivet, Male Nylon/Female PC

Adaptor: 12x LC Duplex



Method A

| LC | Straight | MTP |
|----|----------|-----|
| 1 | → | 12 |
| 2 | → | 11 |
| 3 | → | 10 |
| 4 | → | 9 |
| 5 | → | 8 |
| 6 | → | 7 |
| 7 | → | 6 |
| 8 | → | 5 |
| 9 | → | 4 |
| 10 | → | 3 |
| 11 | → | 2 |
| 12 | → | 1 |

| LC | Straight | MTP |
|----|----------|-----|
| 13 | → | 24 |
| 14 | → | 23 |
| 15 | → | 22 |
| 16 | → | 21 |
| 17 | → | 20 |
| 18 | → | 19 |
| 19 | → | 18 |
| 20 | → | 17 |
| 21 | → | 16 |
| 22 | → | 15 |
| 23 | → | 14 |
| 24 | → | 13 |

| LC Fiber Number | Jacket Color | Fiber Position | MTP Fiber Number |
|-----------------|--------------|----------------|------------------|
| Fiber 1 | Aqua | B | Fiber 12 |
| Fiber 2 | Pink | A | Fiber 11 |
| Fiber 3 | Violet | B | Fiber 10 |
| Fiber 4 | Yellow | A | Fiber 9 |
| Fiber 5 | Black | B | Fiber 8 |
| Fiber 6 | Red | A | Fiber 7 |
| Fiber 7 | White | B | Fiber 6 |
| Fiber 8 | Gray | A | Fiber 5 |
| Fiber 9 | Brown | B | Fiber 4 |
| Fiber 10 | Green | A | Fiber 3 |
| Fiber 11 | Orange | B | Fiber 2 |
| Fiber 12 | Blue | A | Fiber 1 |

| LC Fiber Number | Jacket Color | Fiber Position | MTP Fiber Number |
|-----------------|--------------|----------------|------------------|
| Fiber 13 | Aqua | B | Fiber 24 |
| Fiber 14 | Pink | A | Fiber 23 |
| Fiber 15 | Violet | B | Fiber 22 |
| Fiber 16 | Yellow | A | Fiber 21 |
| Fiber 17 | Black | B | Fiber 20 |
| Fiber 18 | Red | A | Fiber 19 |
| Fiber 19 | White | B | Fiber 18 |
| Fiber 20 | Gray | A | Fiber 17 |
| Fiber 21 | Brown | B | Fiber 16 |
| Fiber 22 | Green | A | Fiber 15 |
| Fiber 23 | Orange | B | Fiber 14 |
| Fiber 24 | Blue | A | Fiber 13 |

GT-CAS-MP24AM-LC24-AFSM

Fiber Cassette MTP24-APC Male to 24xLC/UPC Method-A Flipped Singlemode

Specifications:

Panel Material: SPCC, 1.5mm thickness

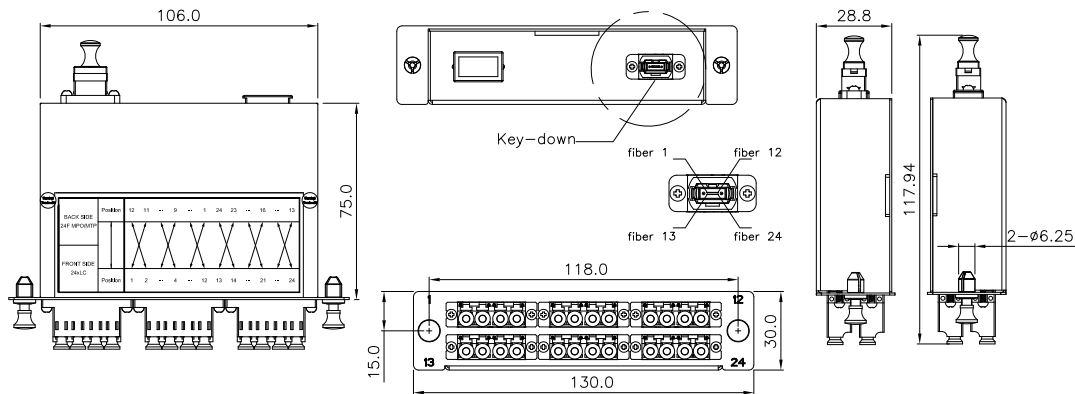
Dimensions: 1.18" x 5.12" x 2.95" (30.0 x 130 x 75mm)

Weight: 0.23kg

Finish: Painted, Black (RAL9005)

Accessory: 2 pcs, Snap Rivet, Male Nylon/Female PC

Adaptor: 12x LC Duplex



Method A Flipped

| LC | Pair Flip | MTP |
|----|-----------|-----|
| 1 | ↗ ↘ | 11 |
| 2 | ↖ ↙ | 12 |
| 3 | ↗ ↘ | 9 |
| 4 | ↖ ↙ | 10 |
| 5 | ↗ ↘ | 7 |
| 6 | ↖ ↙ | 8 |
| 7 | ↗ ↘ | 5 |
| 8 | ↖ ↙ | 6 |
| 9 | ↗ ↘ | 3 |
| 10 | ↖ ↙ | 4 |
| 11 | ↗ ↘ | 1 |
| 12 | ↖ ↙ | 2 |

| LC | Pair Flip | MTP |
|----|-----------|-----|
| 13 | ↗ ↘ | 23 |
| 14 | ↖ ↙ | 24 |
| 15 | ↗ ↘ | 21 |
| 16 | ↖ ↙ | 22 |
| 17 | ↗ ↘ | 19 |
| 18 | ↖ ↙ | 20 |
| 19 | ↗ ↘ | 17 |
| 20 | ↖ ↙ | 18 |
| 21 | ↗ ↘ | 15 |
| 22 | ↖ ↙ | 16 |
| 23 | ↗ ↘ | 13 |
| 24 | ↖ ↙ | 14 |

| LC Fiber Number | Jacket Color | Fiber Position | MTP Fiber Number |
|-----------------|--------------|----------------|------------------|
| Fiber 1 | Pink | B | Fiber 11 |
| Fiber 2 | Aqua | A | Fiber 12 |
| Fiber 3 | Yellow | B | Fiber 9 |
| Fiber 4 | Violet | A | Fiber 10 |
| Fiber 5 | Red | B | Fiber 7 |
| Fiber 6 | Black | A | Fiber 8 |
| Fiber 7 | Gray | B | Fiber 5 |
| Fiber 8 | White | A | Fiber 6 |
| Fiber 9 | Green | B | Fiber 3 |
| Fiber 10 | Brown | A | Fiber 4 |
| Fiber 11 | Blue | B | Fiber 1 |
| Fiber 12 | Orange | A | Fiber 2 |

| LC Fiber Number | Jacket Color | Fiber Position | MTP Fiber Number |
|-----------------|--------------|----------------|------------------|
| Fiber 13 | Pink | B | Fiber 23 |
| Fiber 14 | Aqua | A | Fiber 24 |
| Fiber 15 | Yellow | B | Fiber 21 |
| Fiber 16 | Violet | A | Fiber 22 |
| Fiber 17 | Red | B | Fiber 19 |
| Fiber 18 | Black | A | Fiber 20 |
| Fiber 19 | Gray | B | Fiber 17 |
| Fiber 20 | White | A | Fiber 18 |
| Fiber 21 | Green | B | Fiber 15 |
| Fiber 22 | Brown | A | Fiber 16 |
| Fiber 23 | Blue | B | Fiber 13 |
| Fiber 24 | Orange | A | Fiber 14 |

GT-ENC-SPLICETRAY

Fiber Enclosure Fusion Splice Tray



The GigaTech Products **GT-ENC-SPLICETRAY** fusion splice tray fiber enclosure provides protection and organization of fiber splices. These trays provide ample space for mounting fiber splice protectors and excess fiber. Fiber sleeve holders are molded into the tray along with cable guides for easy fiber routing. As with all GigaTech products, these splice trays are tested for quality and reliability and are covered by our standard Lifetime Warranty.

Features

- 12x LC Duplex Connectors
- Tool-less installation & removal
- Compatible with all LGX panels & enclosures
- Standard TIA/EIA-568.3-D color code

Compliance

- RoHS Compliant
- ISO9001
- TIA/EIA-568-C.3

Applications:

- FHD Rackmount Fiber Management

Specifications

| | | | |
|-----------------------|---------------------|-----------------------|----------------------------|
| Lid Material | Polycarbonate | Tray Material | ABS Plastic |
| Fiber Capacity | 24 | Operating Temp | -40 to 55°C (-40 to 131°F) |
| Dimensions | 129.8 x 31.6 x 33mm | Application | FHD Enclosures |

GT-ENC-SPLICETRAY

Fiber Enclosure Fusion Splice Tray

Specifications:

Tray Material: Polycarbonate Lid, ABS Plastic Tray

Dimensions: 207.5 x 115 x 11.5mm

