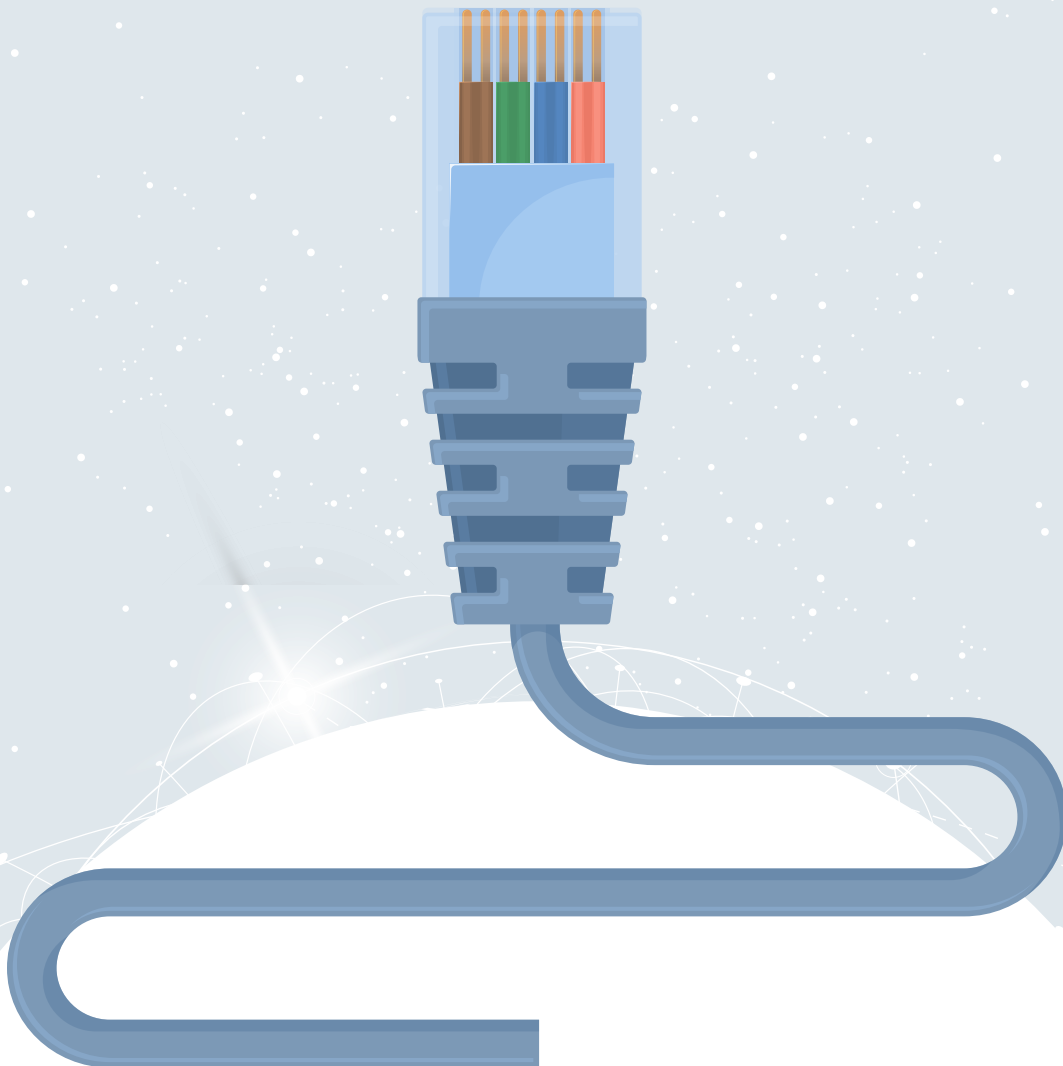


Copper Patch Cable Guide

Comprehensive Copper Network Patch Cable Solutions



www.gigatechproducts.com

Copper Patch Cable Solutions

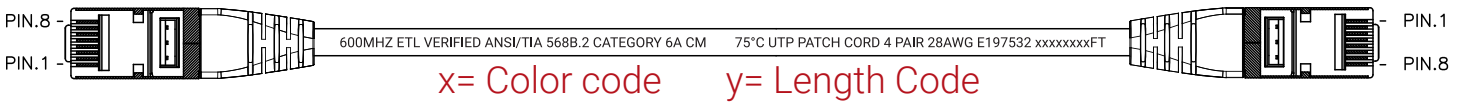
- **GT-C6AS28MB-xy**
CAT6A 600MHz Straight Through U/FTP Skinny 28AWG Clear Molded Boot Patch Cord
- **GT-C6ASMB-xy**
CAT6A 600MHz Straight Through U/FTP Clear Molded Boot Patch Cord
- **GT-C628MB-xy**
CAT6 550MHz Straight Through Skinny 28AWG Clear Molded Boot Patch Cord
- **GT-C6MB-xy**
CAT6 550MHz Straight Through Molded Boot Patch Cord
- **GT-C6NB-xy**
CAT6 550MHz Straight Through No Boot Patch Cord
- **GT-C5EMB-xy**
CAT5E 350MHz Straight Through Molded Boot Patch Cord
- **GT-C5ENB-xy**
CAT5E 350MHz Straight Through No Boot Patch Cord



GT-C6AS28MB-xy

CAT6A 600MHz Straight Through U/FTP Skinny 28AWG Clear Molded Boot Patch Cord

- **UL, CM Rated Jacket**
- **4 Pair, 100% Copper, 28 AWG**
- **Slim Molded Snag-free Clear Boots (Ultra flexible)**
- **Elongated Mod Plugs for “Deep” depth switching cavities**
- **50um Gold Plating on Shielded Mod-Plug contacts**



Color Options



Standard Stock Lengths: 1FT – 10FT, 14FT, 20FT, 25FT



GT-C6AS28MB-Ky
Black



GT-C6AS28MB-By
Blue



GT-C6AS28MB-Ny
Green



GT-C6AS28MB-Gy
Gray



GT-C6AS28MB-Oy
Orange



GT-C6AS28MB-Py
Purple



GT-C6AS28MB-Ry
Red



GT-C6AS28MB-Wy
White

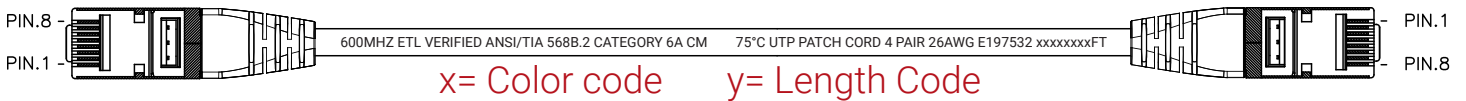


GT-C6AS28MB-Yy
Yellow

GT-C6ASMB-xy

CAT6A 600MHz Straight Through U/FTP Clear Molded Boot Patch Cord

- **UL, CM Rated Jacket**
- **4 Pair, 100% Copper, 26 AWG**
- **Molded Snag-free Clear Boots (Ultra flexible)**
- **Elongated Mod Plugs for “Deep” depth switching cavities**
- **50um Gold Plating on Shielded Mod-Plug contacts**



Color Options



Standard Stock Lengths: 1FT - 10FT, 14FT, 15FT, 20FT, 25FT



GT-C6ASMB-Ky
Black



GT-C6ASMB-By
Blue



GT-C6ASMB-Ny
Green



GT-C6ASMB-Gy
Gray



GT-C6ASMB-Oy
Orange



GT-C6ASMB-Py
Purple



GT-C6ASMB-Ry
Red



GT-C6ASMB-Wy
White

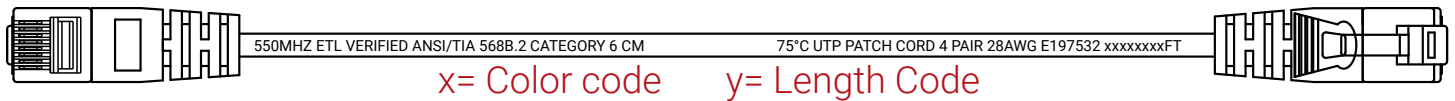


GT-C6ASMB-Yy
Yellow

GT-C628MB-xy

CAT6 550MHz Straight Through Skinny 28AWG Clear Molded Boot Patch Cord

- **UL, CM Rated Jacket**
- **4 Pair, 100% Copper, 28 AWG**
- **Slim Molded Snag-free Clear Boots (Ultra flexible)**
- **Elongated Mod Plugs for “Deep” depth switching cavities**
- **50um Gold Plating on Shielded Mod-Plug contacts**



Color Options



Standard Stock Lengths: 1FT - 10FT, 15FT, 20FT, 25FT



GT-C628SMB-Ky
Black



GT-C628SMB-By
Blue



GT-C628SMB-Ny
Green



GT-C628SMB-Gy
Gray



GT-C628SMB-Oy
Orange



GT-C628SMB-Py
Purple



GT-C628SMB-Ry
Red



GT-C628SMB-Wy
White

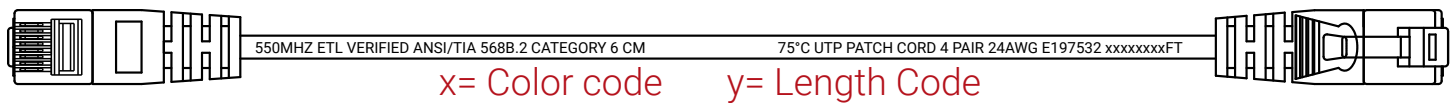


GT-C628SMB-Yy
Yellow

GT-C6MB-xy

CAT6 550MHz Straight Through 24AWG Molded Boot Patch Cord

- **UL, CM Rated Jacket**
- **4 Pair, 100% Copper, 24 AWG**
- **Molded Snag-free Claw Boots (Ultra flexible)**
- **Elongated Mod Plugs for “Deep” depth switching cavities**
- **50um Gold Plating on Shielded Mod-Plug contacts**



Color Options



Standard Stock Lengths: 1FT - 10FT, 12FT, 14FT,15FT, 20FT, 25FT, 50FT, 75FT, 100FT



GT-C6MB-Ky
Black



GT-C6MB-By
Blue



GT-C6MB-Ny
Green



GT-C6MB-Gy
Gray



GT-C6MB-Oy
Orange



GT-C6MB-Py
Purple



GT-C6MB-Ry
Red



GT-C6MB-Wy
White

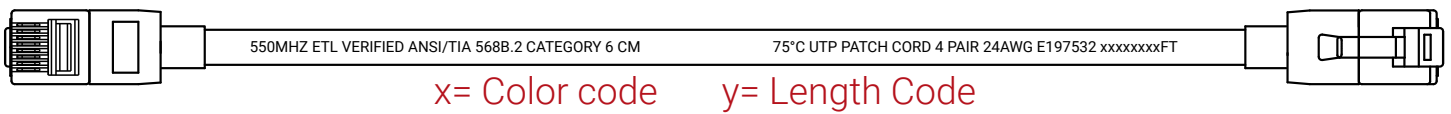


GT-C6MB-Yy
Yellow

GT-C6NB-xy

CAT6 550MHz Straight Through 24AWG No Boot Patch Cord

- **UL, CM Rated Jacket**
- **4 Pair, 100% Copper, 24 AWG**
- **Elongated Mod Plugs for “Deep” depth switching cavities**
- **50um Gold Plating on Shielded Mod-Plug contacts**



Color Options



Standard Stock Lengths: 1FT - 10FT, 12FT, 14FT,15FT, 20FT, 25FT, 50FT, 75FT, 100FT



GT-C6NB-Ky
Black



GT-C6NB-By
Blue



GT-C6NB-Ny
Green



GT-C6NB-Gy
Gray



GT-C6NB-Oy
Orange



GT-C6NB-Py
Purple



GT-C6NB-Ry
Red



GT-C6NB-Wy
White

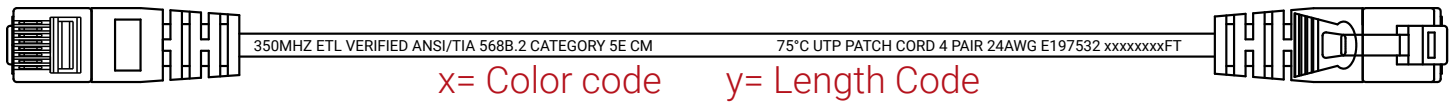


GT-C6NB-Yy
Yellow

GT-C5EMB-xy

CAT5E 350MHz Straight Through Molded Boot Patch Cord

- **UL, CM Rated Jacket**
- **4 Pair, 100% Copper, 24 AWG**
- **Molded Snag-free Claw Boots (Ultra flexible)**
- **Elongated Mod Plugs for “Deep” depth switching cavities**
- **50um Gold Plating on Shielded Mod-Plug contacts**



Color Options



Standard Stock Lengths: 1FT - 10FT, 12FT, 14FT,15FT, 20FT, 25FT, 50FT, 75FT, 100FT



GT-C5EMB-Ky
Black



GT-C5EMB-By
Blue



GT-C5EMB-Ny
Green



GT-C5EMB-Gy
Gray



GT-C5EMB-Oy
Orange



GT-C5EMB-Py
Purple



GT-C5EMB-Ry
Red



GT-C5EMB-Wy
White

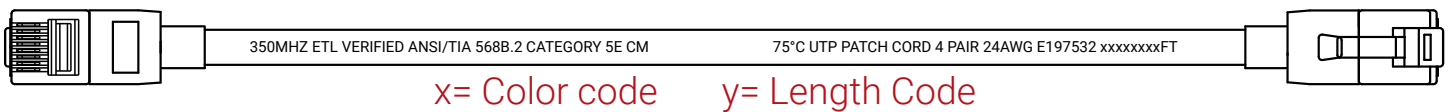


GT-C5EMB-Yy
Yellow

GT-C5ENB-xy

CAT6 550MHz Straight Through 24AWG No Boot Patch Cord

- **UL, CM Rated Jacket**
- **4 Pair, 100% Copper, 24 AWG**
- **Elongated Mod Plugs for “Deep” depth switching cavities**
- **50um Gold Plating on Shielded Mod-Plug contacts**



Color Options



Standard Stock Lengths: 1FT - 10FT, 12FT, 14FT,15FT, 20FT, 25FT, 50FT, 75FT, 100FT



GT-C5ENB-Ky
Black



GT-C5ENB-By
Blue



GT-C5ENB-Ny
Green



GT-C5ENB-Gy
Gray



GT-C5ENB-Oy
Orange



GT-C5ENB-Py
Purple



GT-C5ENB-Ry
Red



GT-C5ENB-Wy
White



GT-C5ENB-Yy
Yellow

Copper Cable Categories

GigaTech Products copper patch cables are manufactured using state-of-the-art equipment and pure copper wiring. With a myriad of jacket colors and customizable lengths, these cables are perfect for any unique environment and installation. GigaTech copper cables are designed with a narrow connector and soft snagless boot for easy installation in high density panels and systems. All items are manufactured using the highest quality components, are UL & CM rated, and covered by a Lifetime Warranty.

Cat5e (Category 5 enhanced)

- Max. Speed Up to 1 Gbps
- Typically Unshielded, Available in Shielded

Category 5 cables were introduced in 1995, providing for 100 Mbps network speeds with 100 MHz bandwidth. This type of wiring could send network data packets up to 100 meters (328 feet) without amplification. The cable's capabilities were a big leap forward, but they pale in comparison to what came next: Cat5e, or enhanced Category 5, cables. This improved version of Cat5 cabling was able to push the data transfer rate to 1 Gbps – ten times the previous rate. Even though this type of cable is now more than 20 years old, it is still very popular and widely used. GigaTech Products Cat5e EXCEEDS INDUSTRY STANDARD at 350 MHz, allowing for a stronger signal and less packet loss.

Cat6 (Category 6)

- Max. Speed Up to 1 Gbps
- Typically Unshielded, Available in Shielded

Cat6 carries a stronger signal than Cat5e due to improved insulation, allowing for less (or no) crosstalk interference. Cat6 wiring standards provide for 250 MHz bandwidth, supporting Gigabit speed up to 100 meters (328 feet) and 10 Gbps speed up to 50M (164 feet). Cat6 cabling is more qualified to handle the fast pace of today's Gigabit Ethernet networks and limited 10 Gbps connections. GigaTech Products Cat6 EXCEEDS INDUSTRY STANDARD at 550 MHz, allowing for a stronger signal.

Cat6a (Augmented Category 6)

- Max. speed up to 10 Gbps @ 100 m (328 ft.)
- Typically Shielded, Available in Unshielded

Cat6a (Category 6 augmented) is the right choice for a long-term 10 Gbps networks. Cat6a cables also provide for even less crosstalk than Cat6 due to shielding around each wire pair. Industry standard for Cat6a supports the same 10 Gbps transmission speed as Cat6, but up to 100 Meters (328 feet) and at 500 MHz. While Cat6a is more expensive than Cat5e and Cat6, the hardware in the network will only become more sophisticated as technology grows. GigaTech Products Cat6a EXCEEDS INDUSTRY STANDARD at 600 MHz, equaling the pending Cat7 standard.

Cat8.x (Category 8, 8.1 [Class I] and 8.2 [Class II])

- Max. Speed Up to 40 Gbps
- Only Available as Shielded

Cat8 is recommended for data-center environments or high-speed switch-to-switch and server communications in a 25 Gbps or 40 Gbps copper network. Due to the design, Cat8, Cat8.1 and Cat8.2 support transmission speeds of 10 Gbps up to 100 meters (328 feet) or 25 Gbps and 40 Gbps up to 30 meters (98.5 feet) with an impressive 2,000 MHz frequency that even better prevents crosstalk. Where Cat8 and 8.1 are backward compatible, Cat8.2 is not since it does not use standard RJ45 connectors.

Category	Max Transfer Speed	Max Bandwidth	Shielding	Official Standard
Cat 5e	1,000 Mbps	100 MHz	unshielded + shielded	yes
Cat 6	1,000 Mbps	250 MHz	unshielded + shielded	yes
Cat 6a	10 Gbps	500 MHz	unshielded + shielded	yes
Cat 8	40 Gbps	2 GHz	shielded	yes

Cable Shielding

ISO/IEC11801 Name	Common Name	Outer Shielding Type	Twisted Pair Shielding
U/UTP	UTP	None	None
U/FTP	STP, PiMF, ScTP	None	Foil Shielding
F/UTP	FTP, STP, ScTP	Foil Shielding	None
F/FTP	FTP	Foil Shielding	Foil Shielding
S/UTP	STP, ScTP	Braid Shielding	None
S/FTP	SSTP, SFTP, STP PiMF	Braid Shielding	Foil Shielding
SF/UTP	SFTP, STP	Braid & Foil Shielding	None
SF/FTP	SFTP, STP	Braid & Foil Shielding	Foil Shielding

